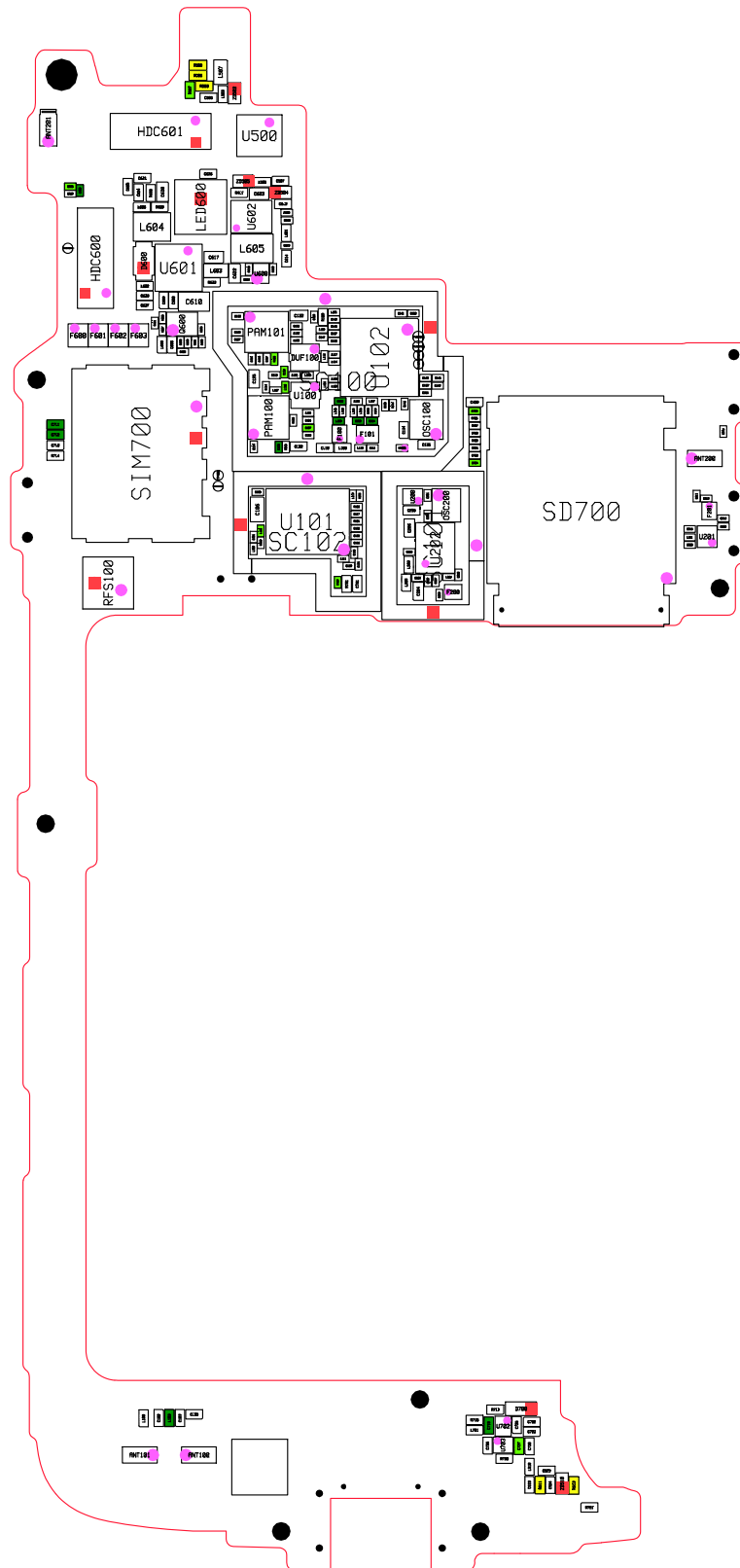


8-1.Block Diagram

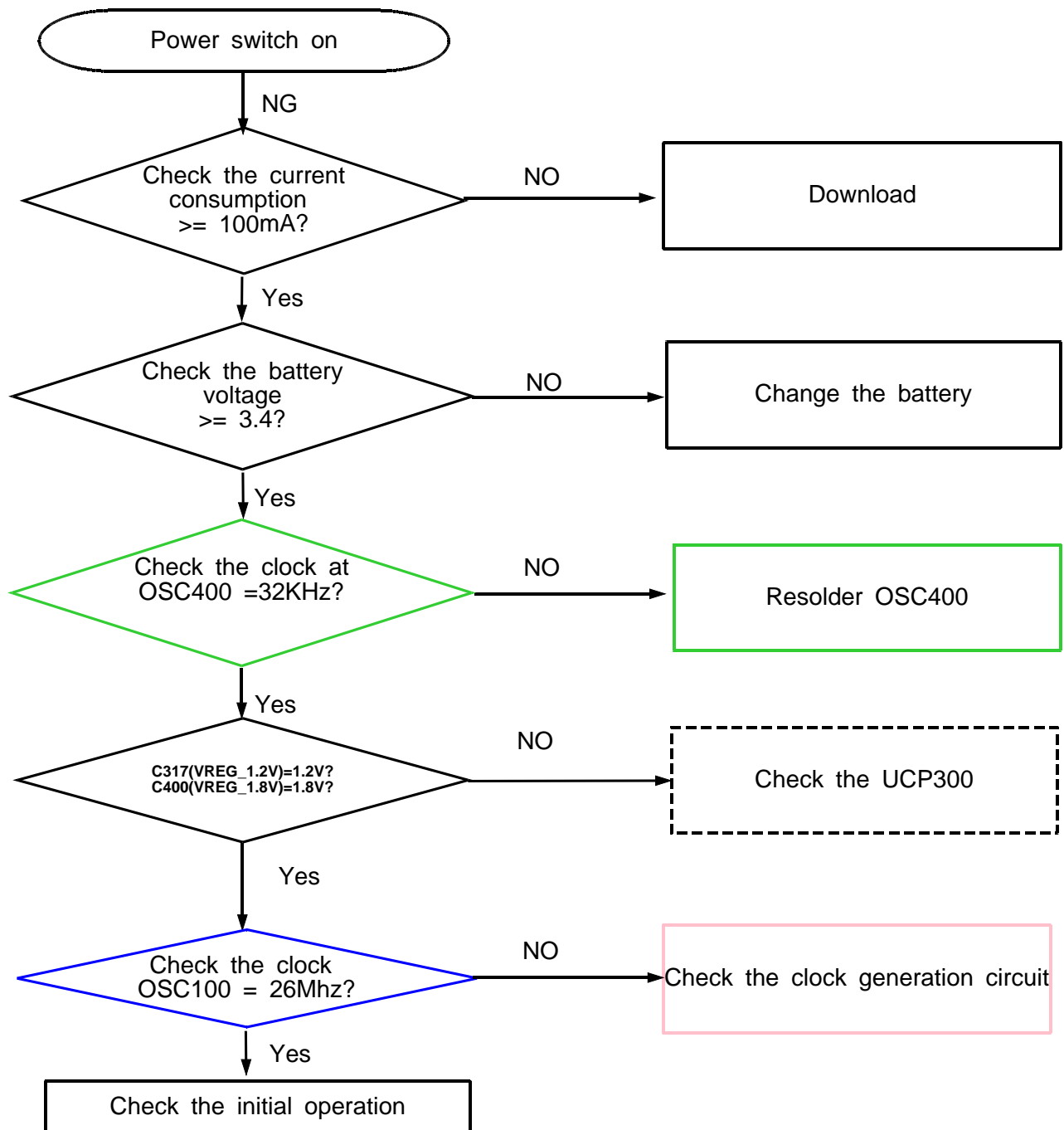


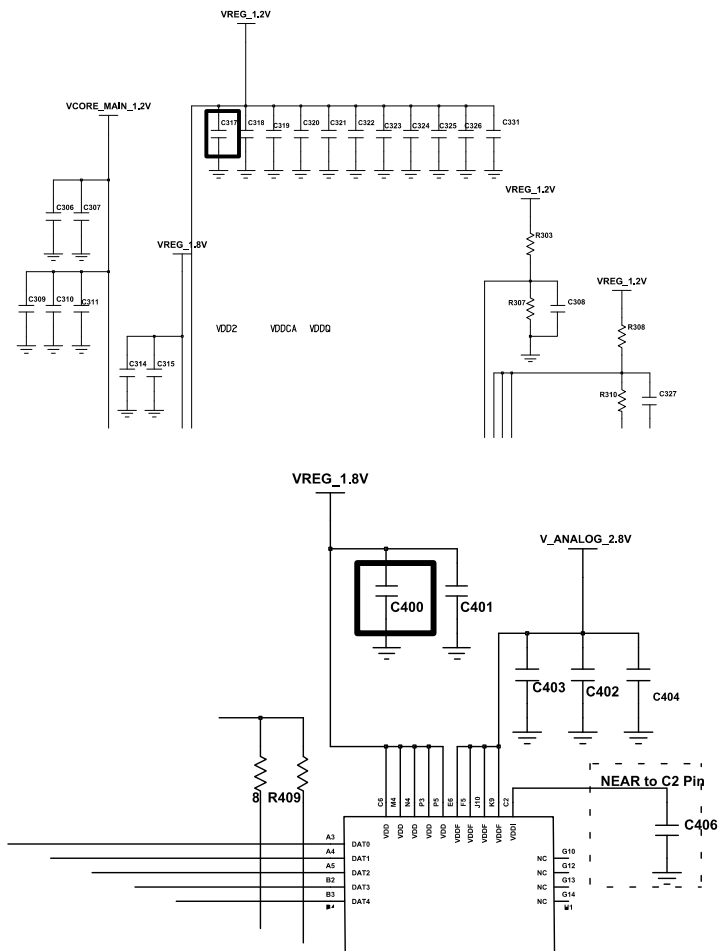
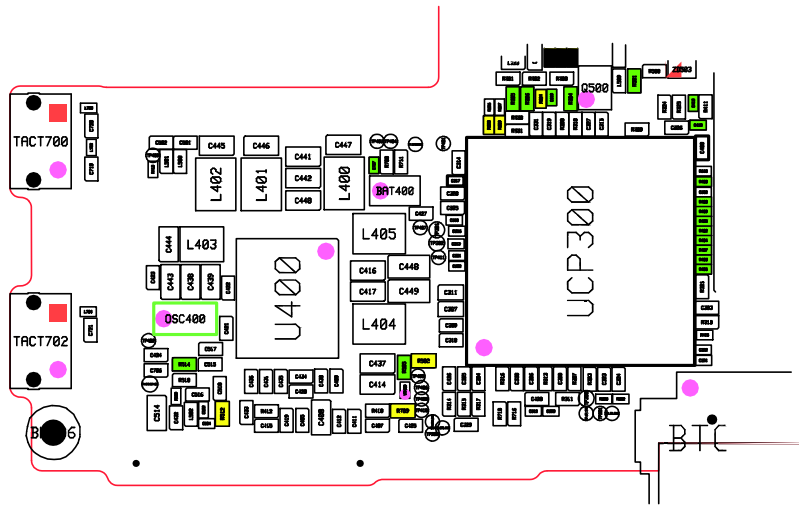
8-2-2. Bottom



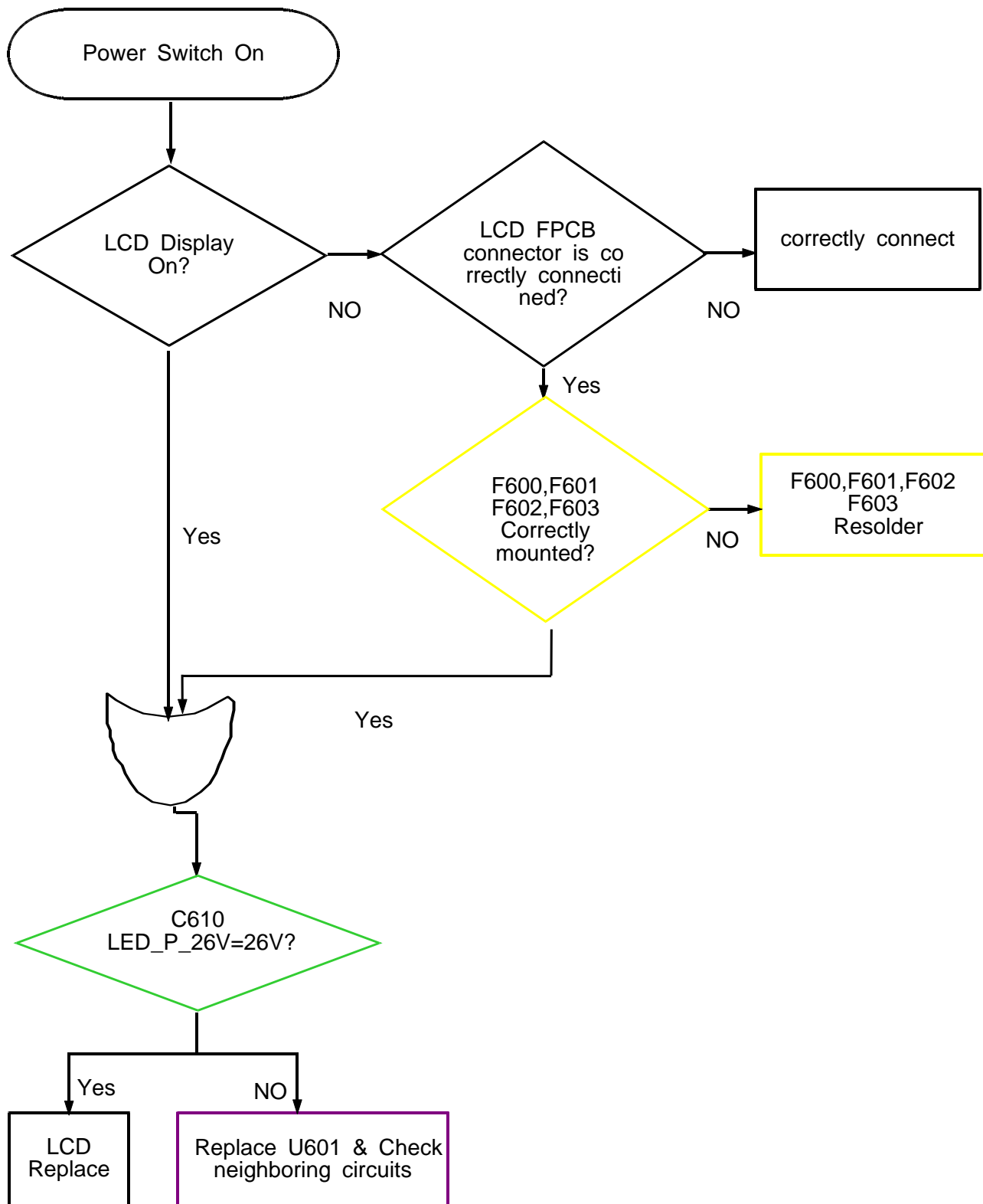
8-3. LOGIC

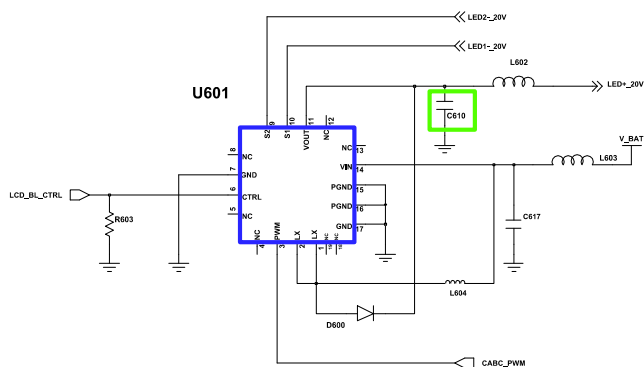
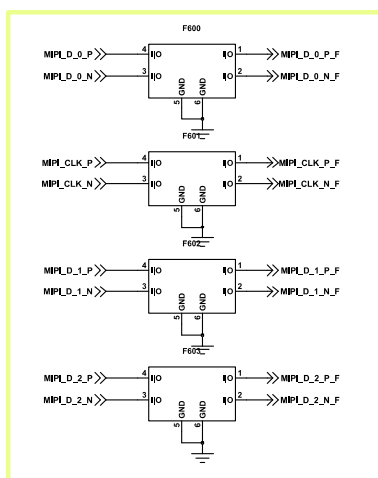
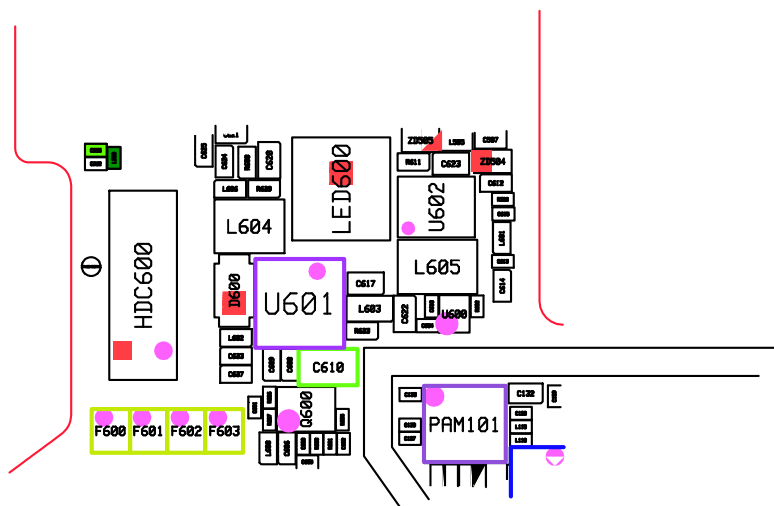
8-3-1. Power On





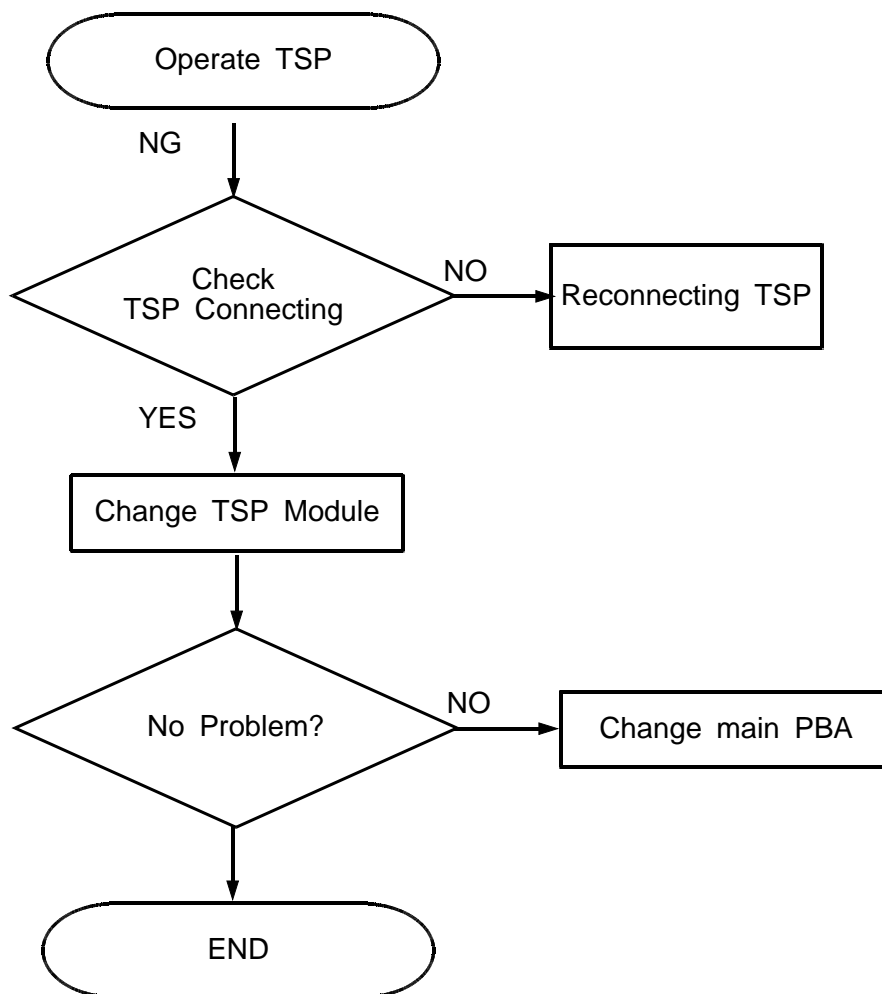
8-3-2. LCD Working





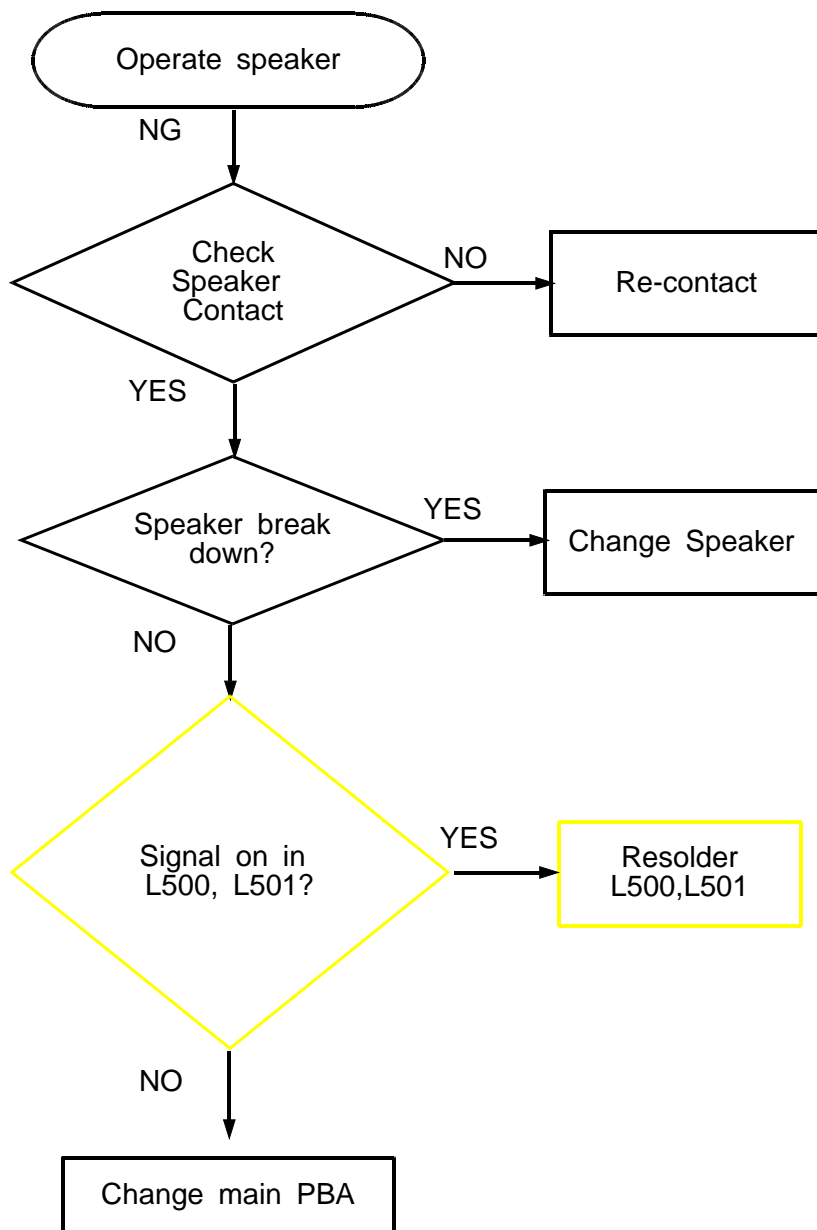
LCD BLIC

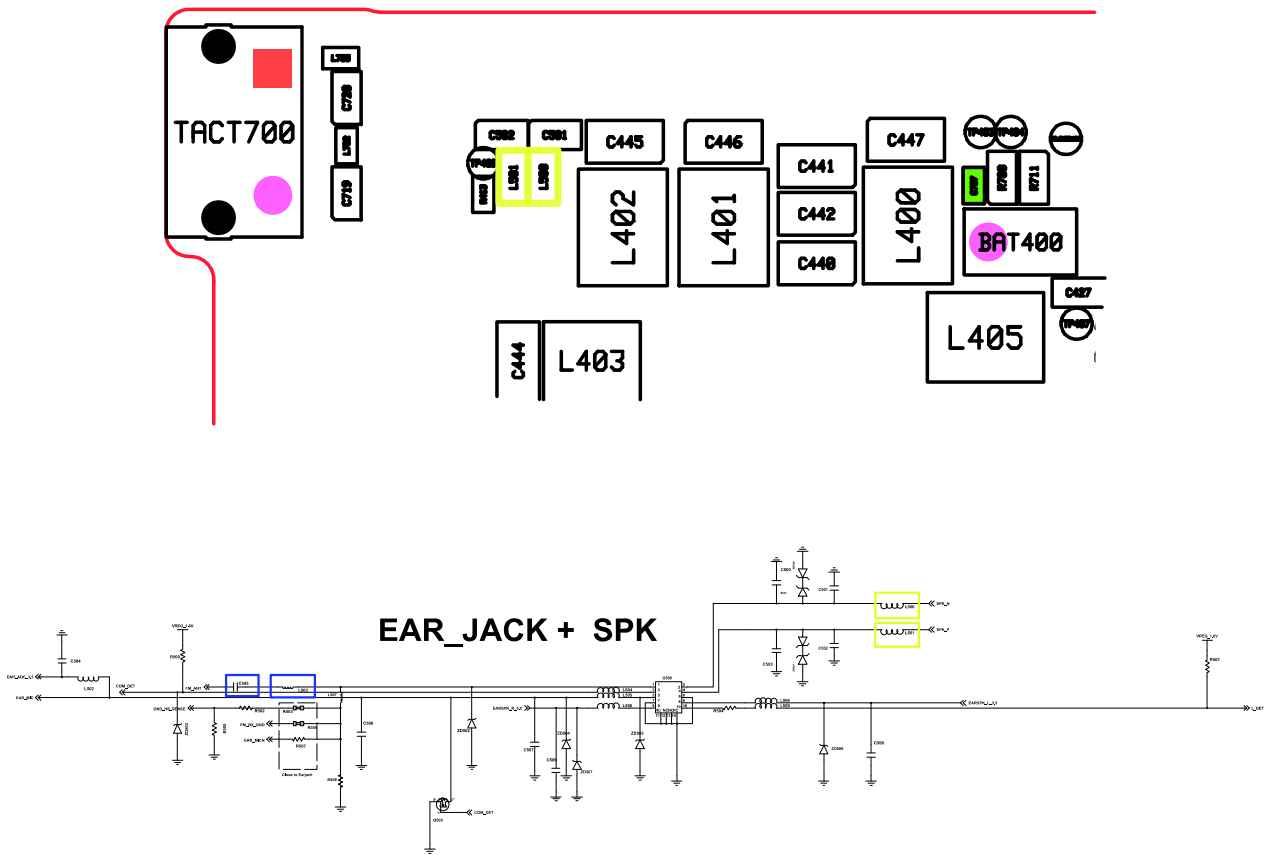
8-3-3. TSP



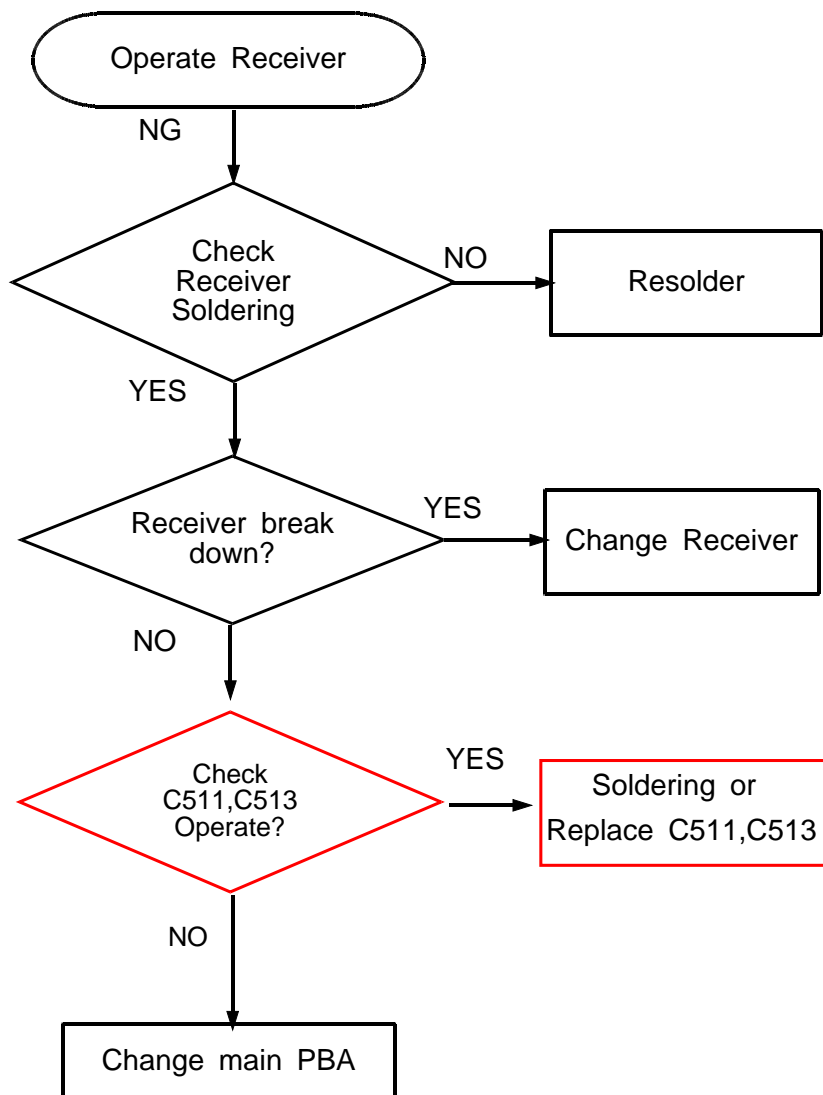
8-3-4 Audio Working

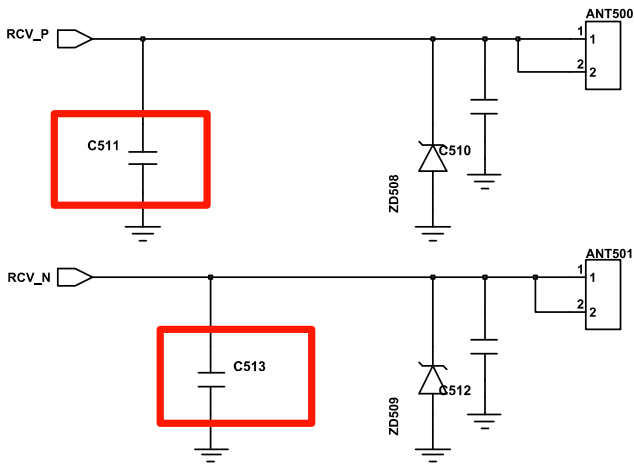
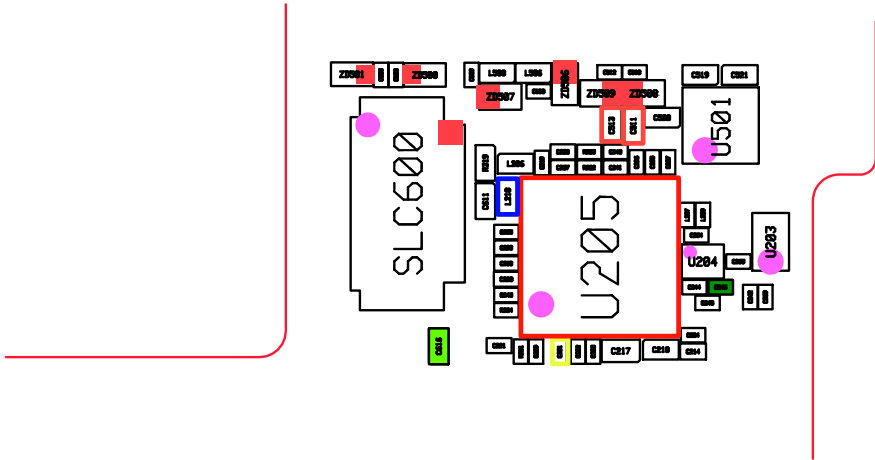
- Speaker Working





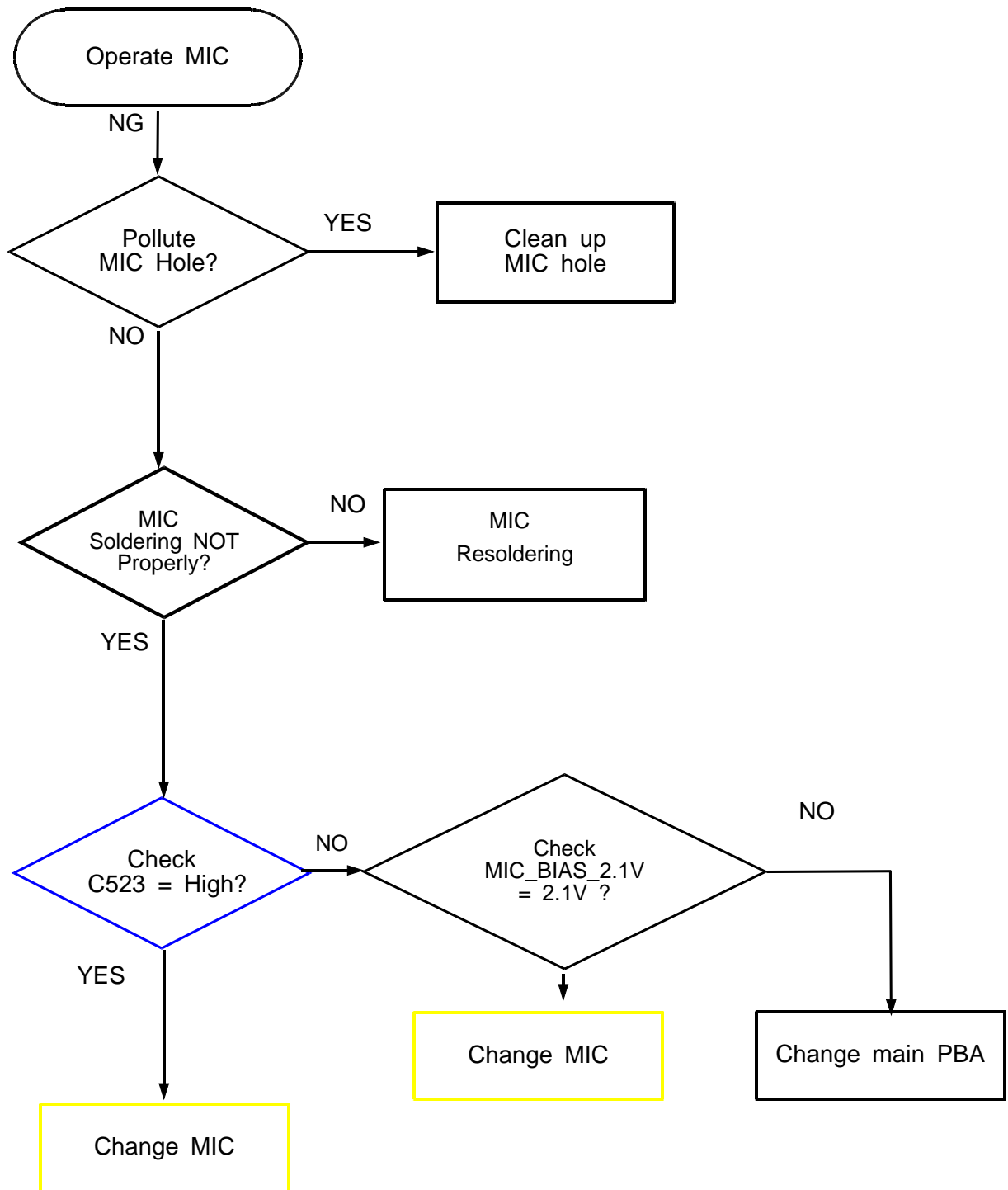
■ Receiver Working

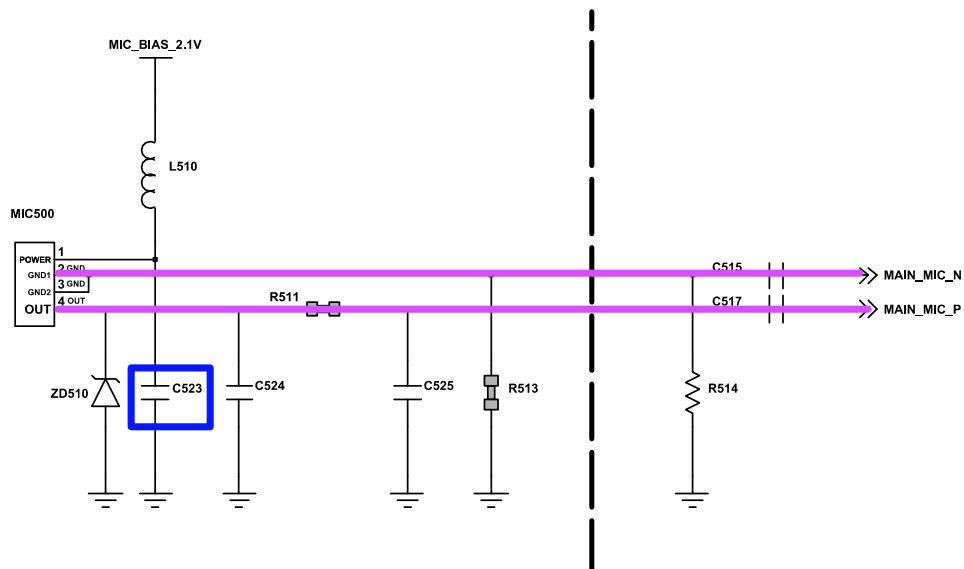
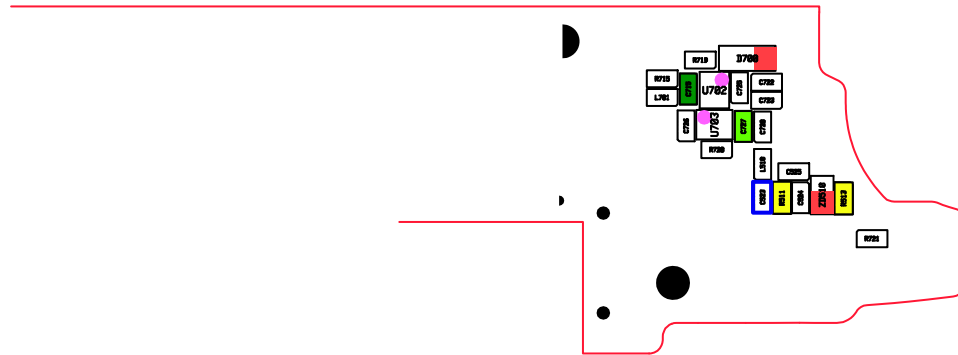




RCV

- Main MIC Working

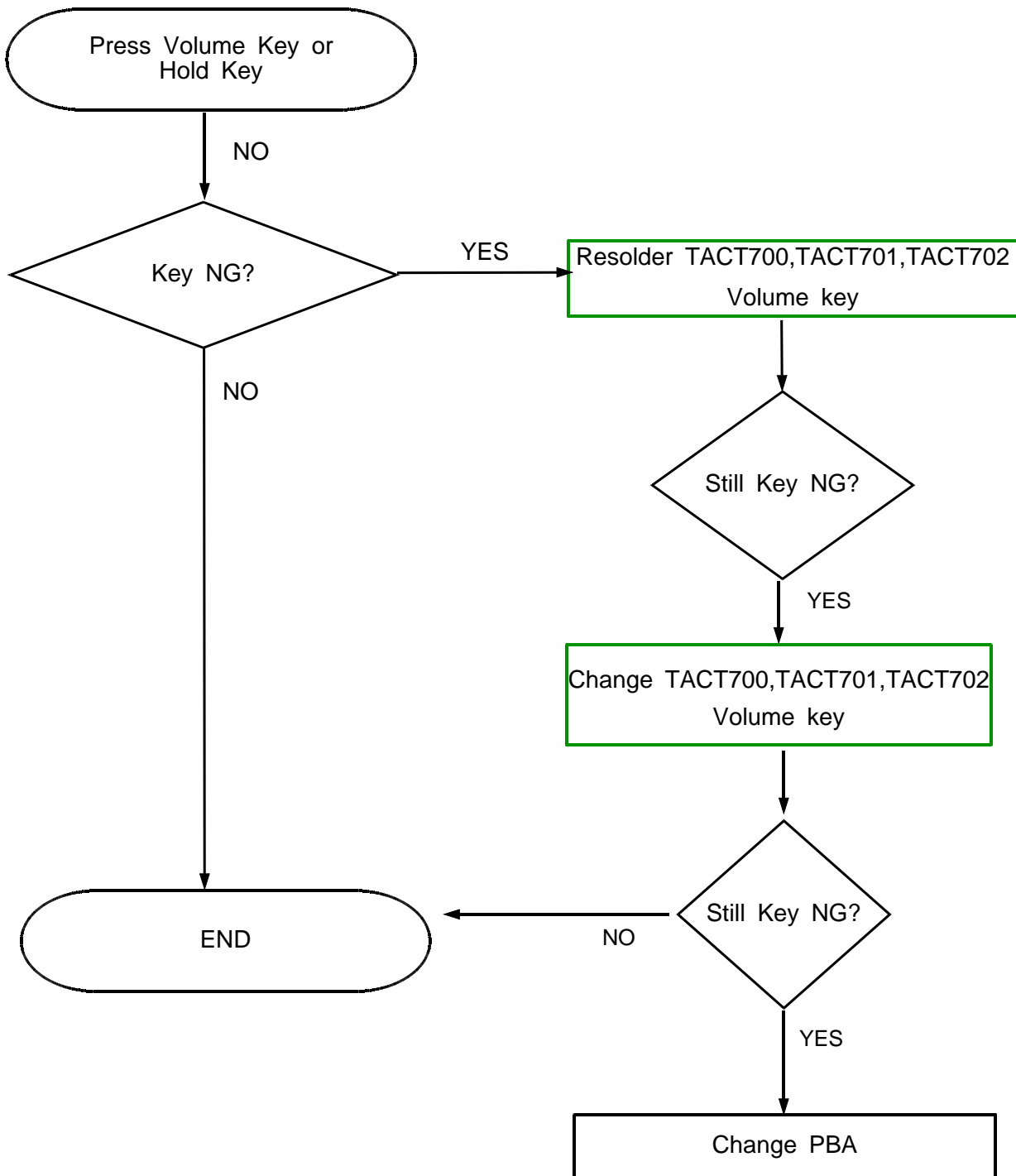


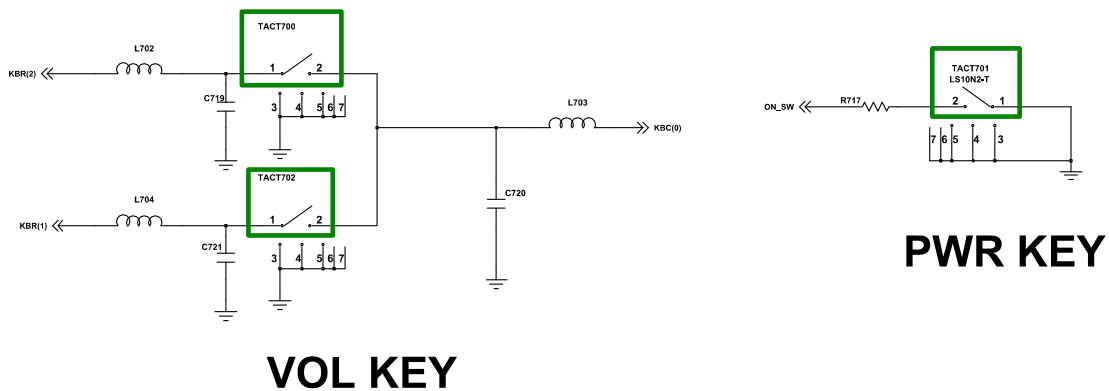
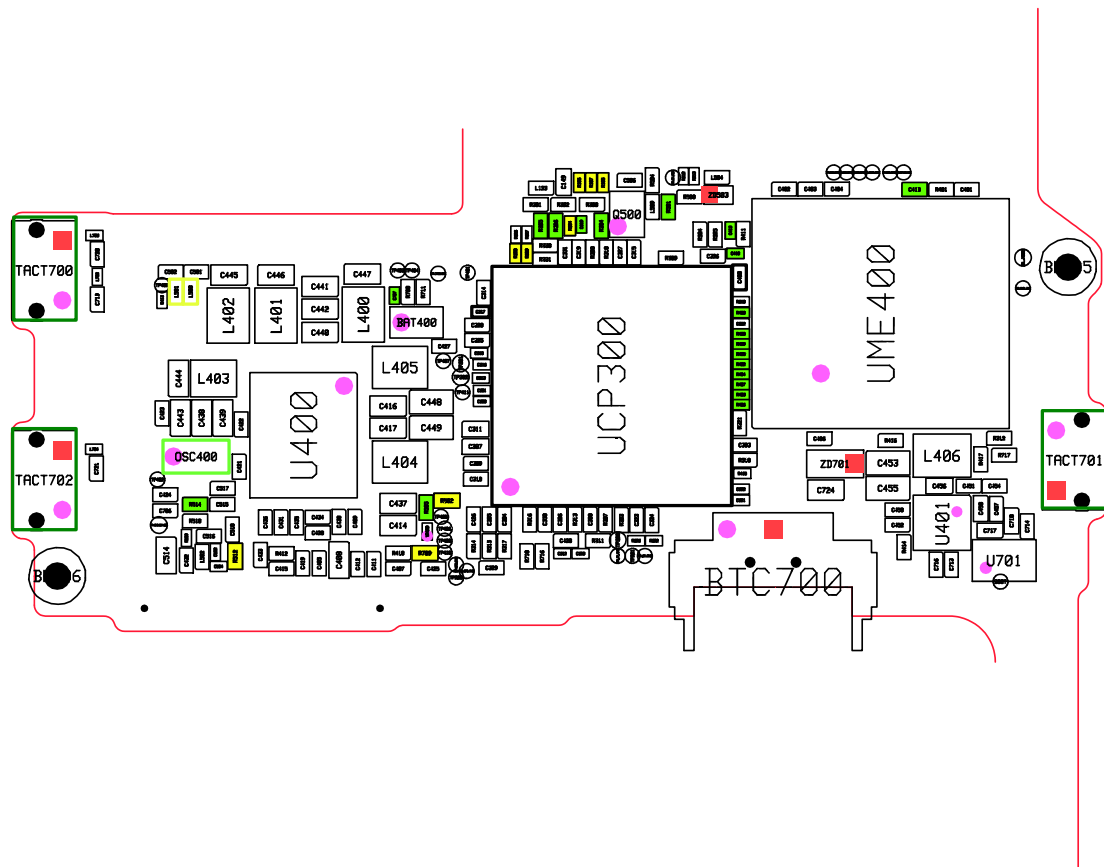


MAIN MIC

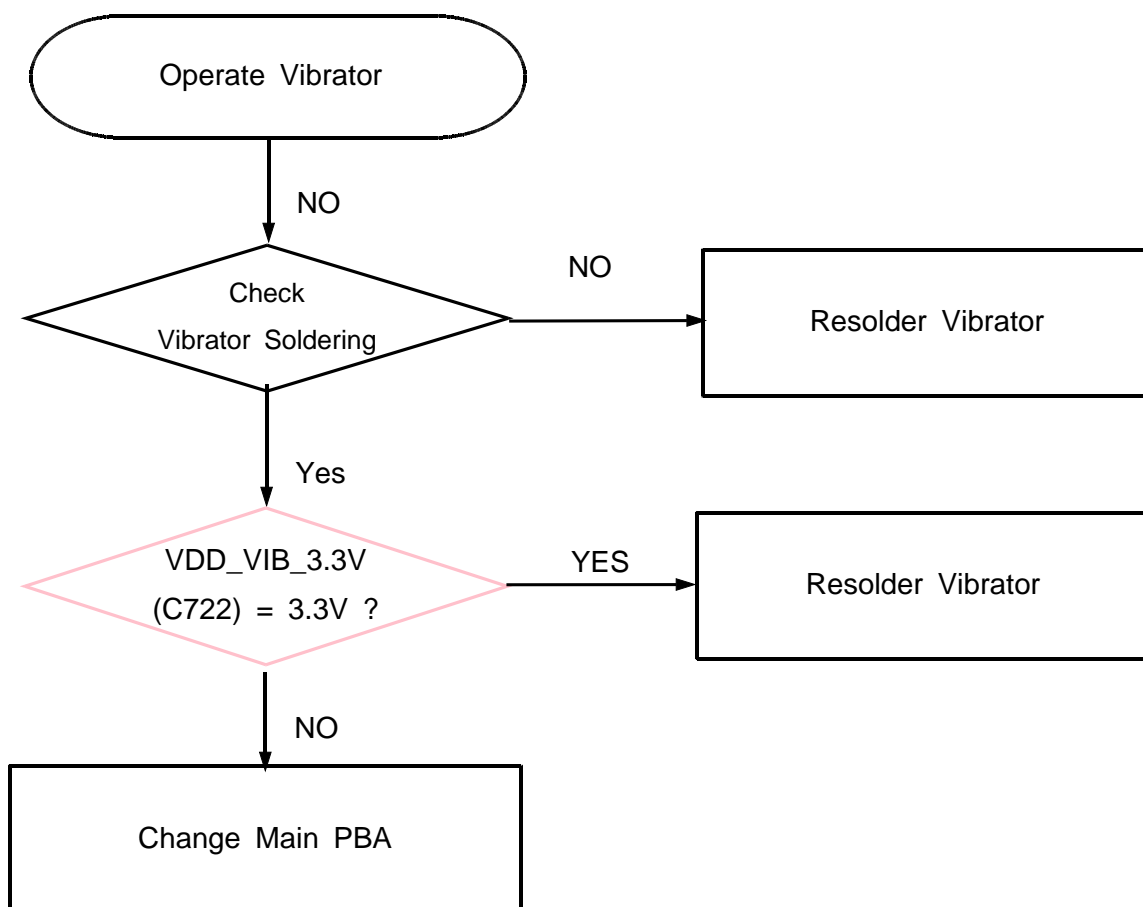
8-3-5. KEY Working

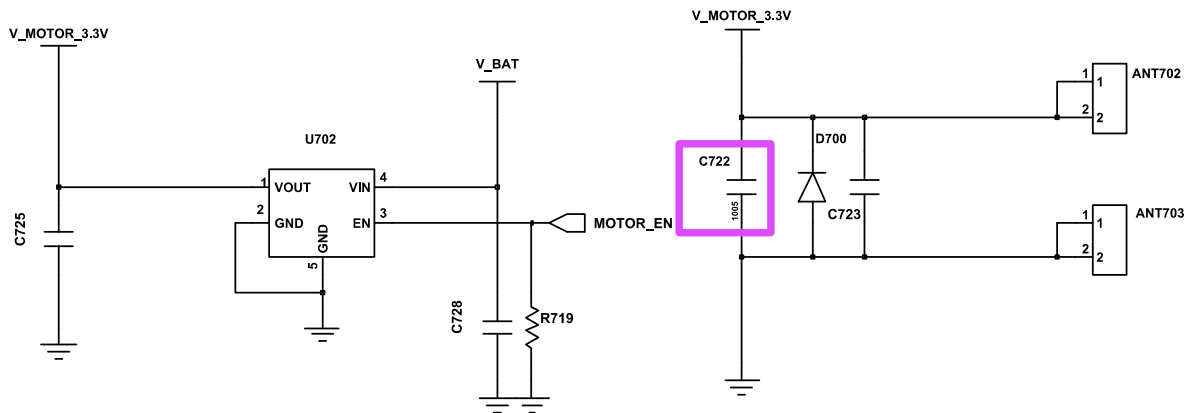
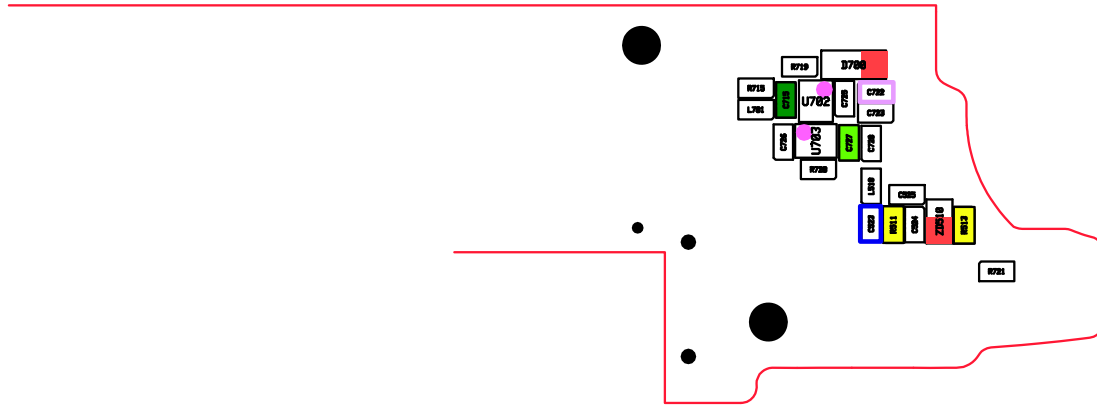
- Volume KEY, Hold KEY





8-3-6. Vibrator Working

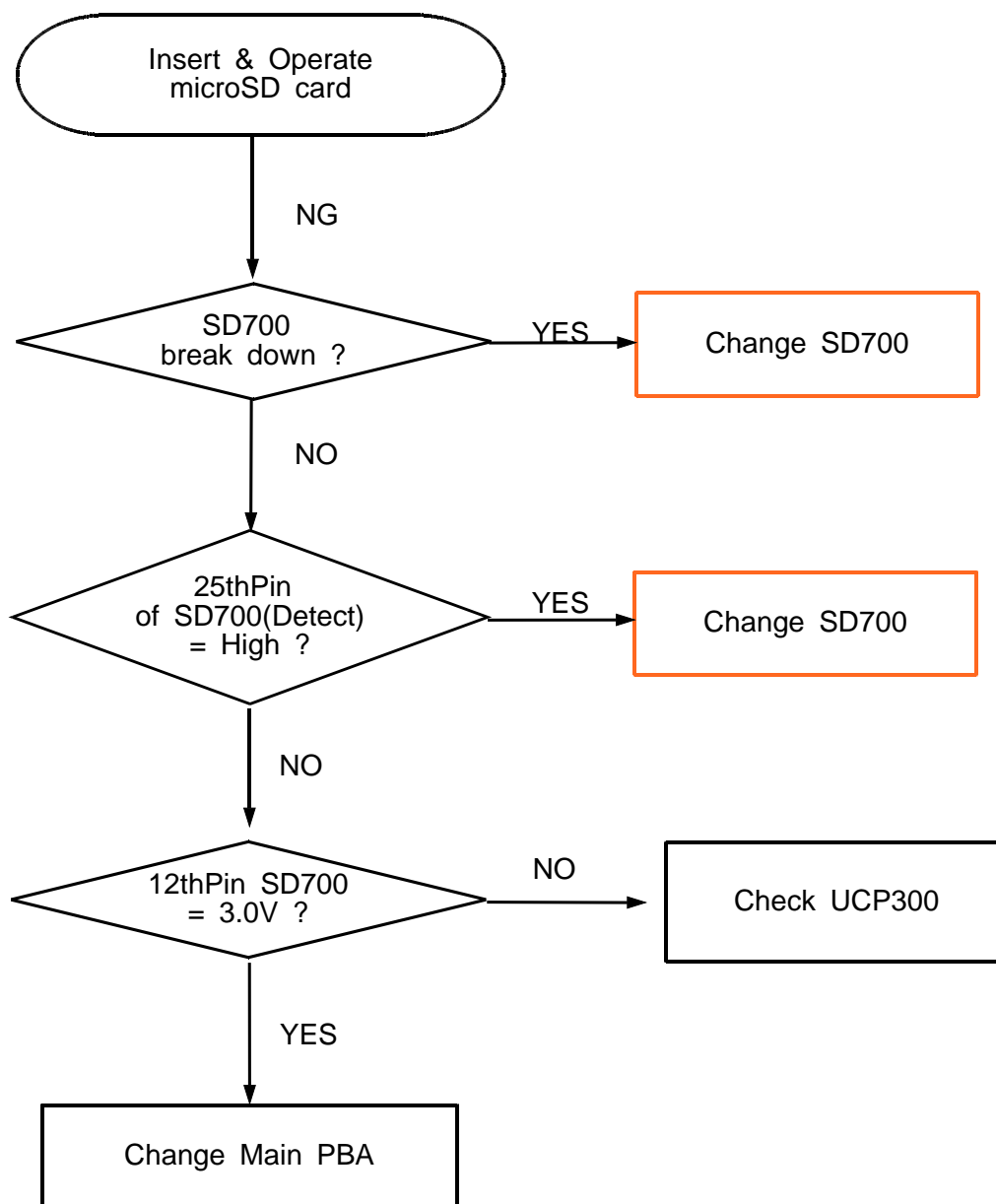


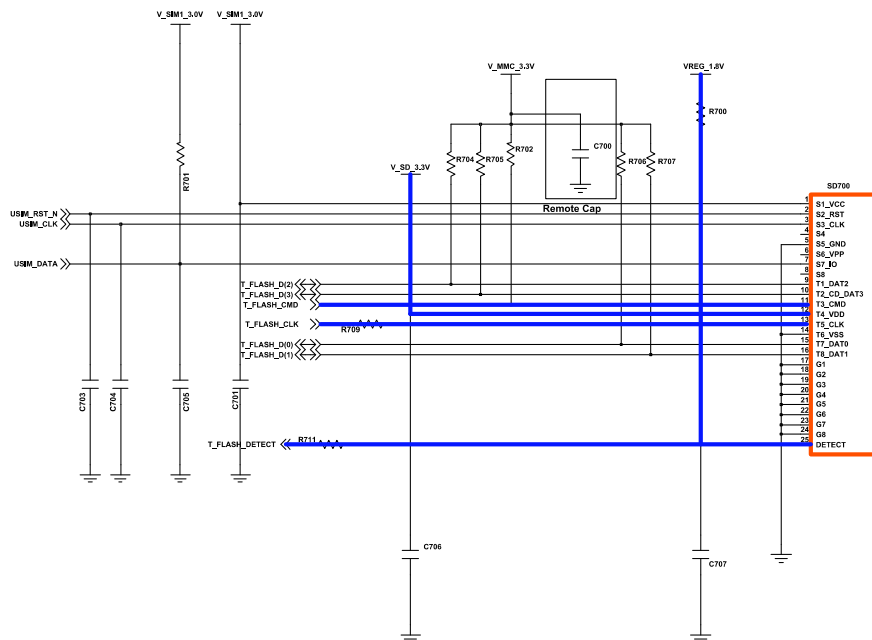
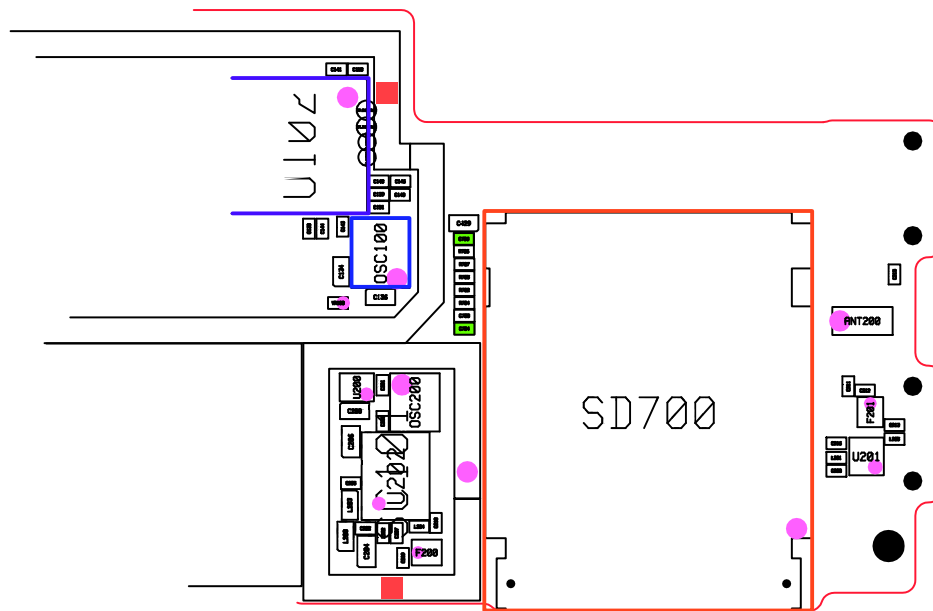


MOT LDO

MOT

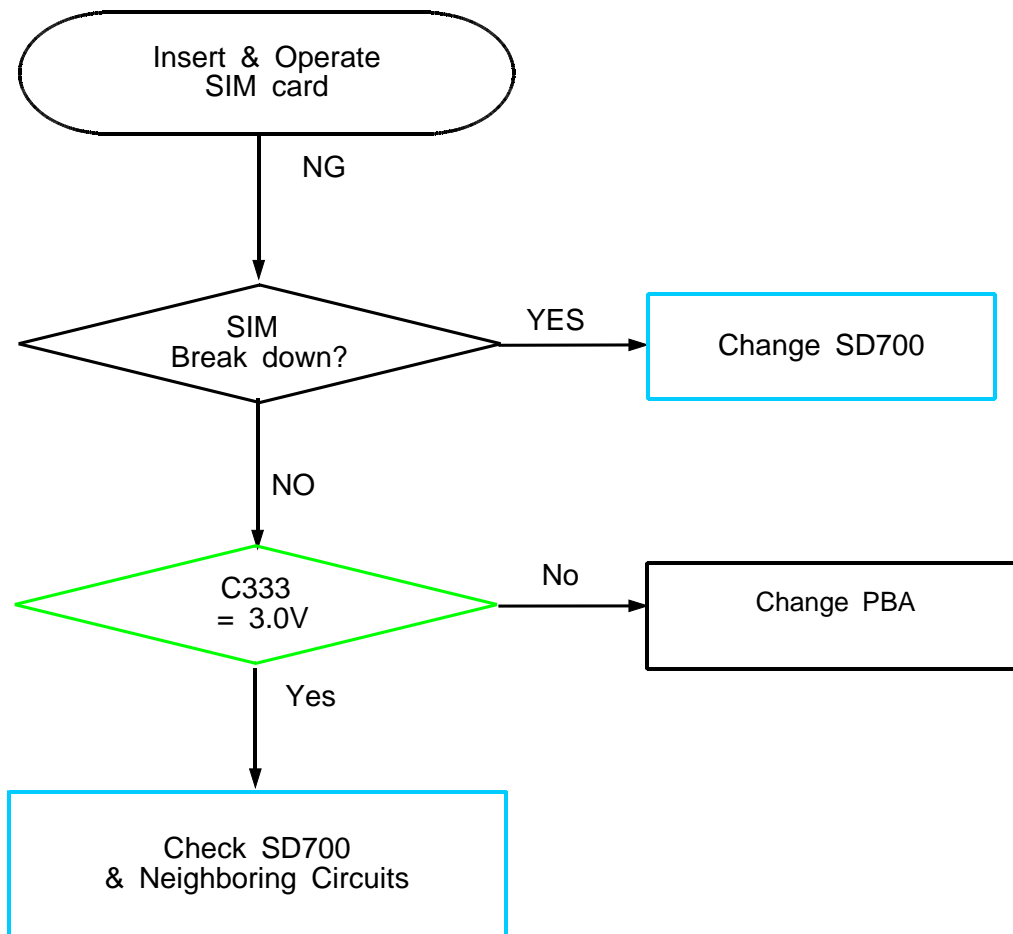
8-3-7. T-Flash Card Working

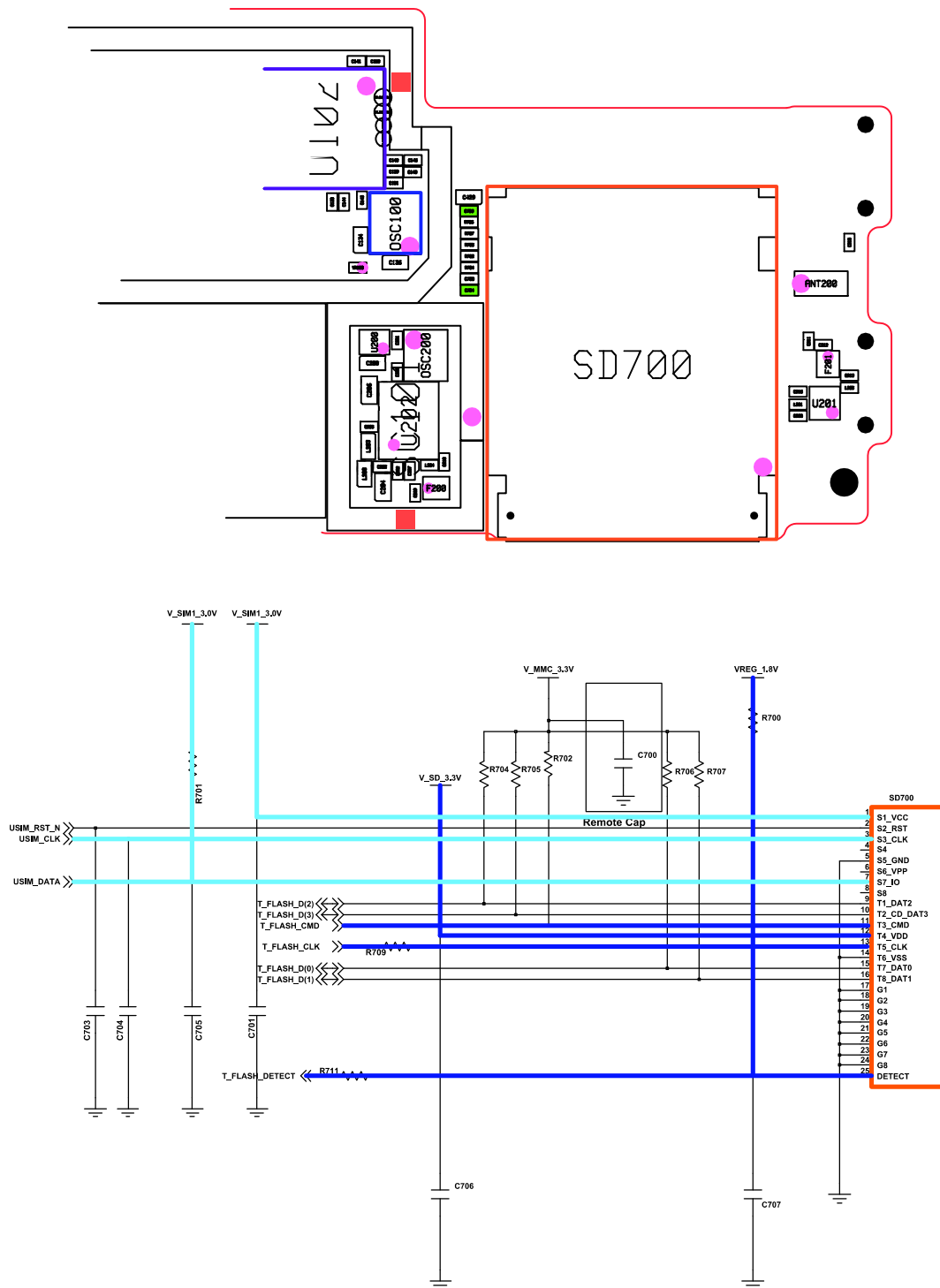




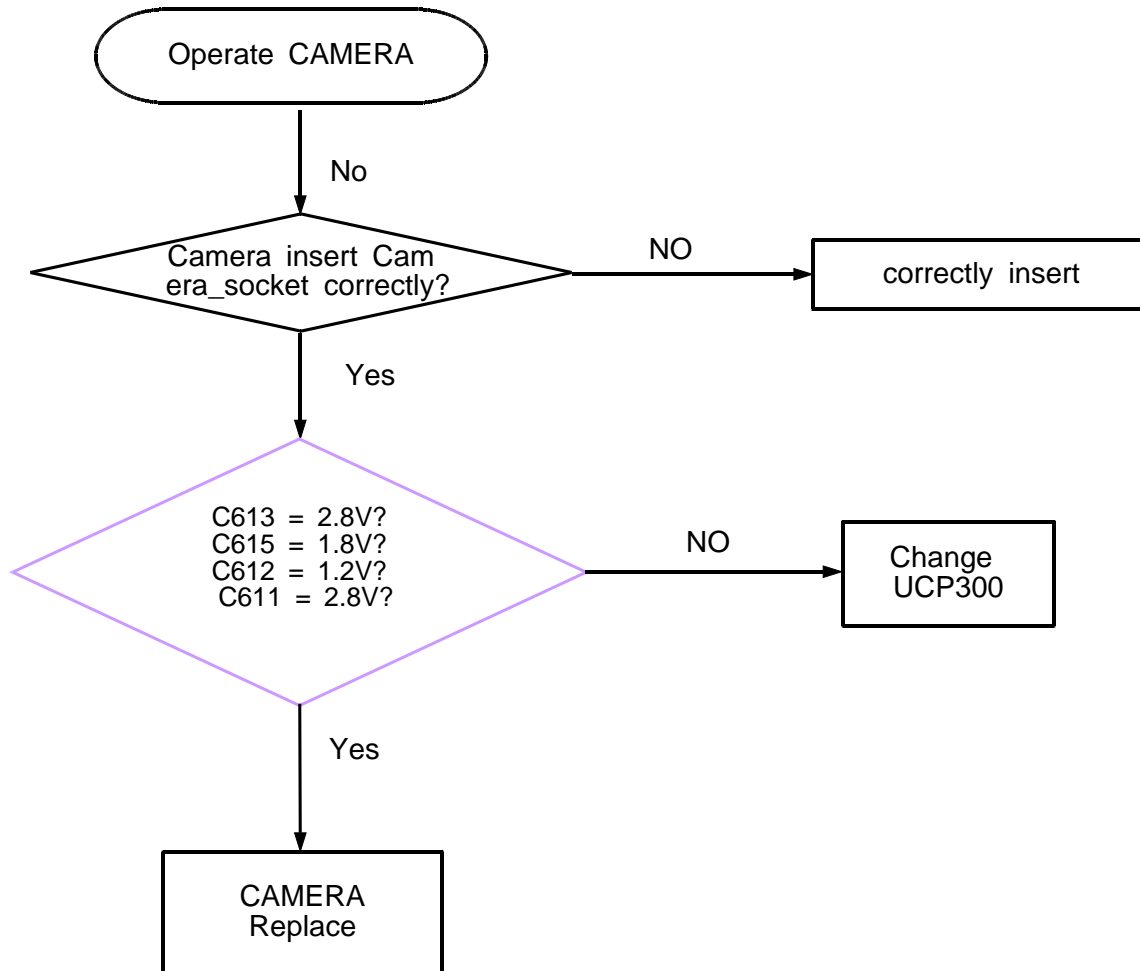
SD & SIM CON

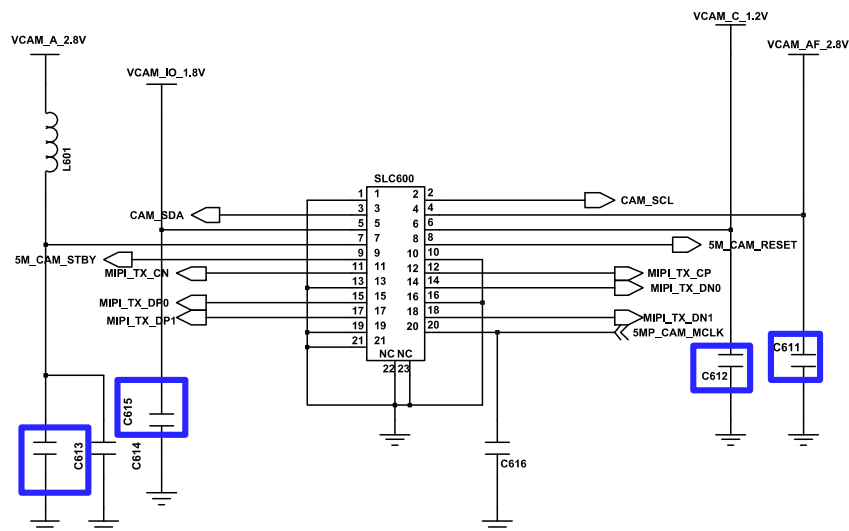
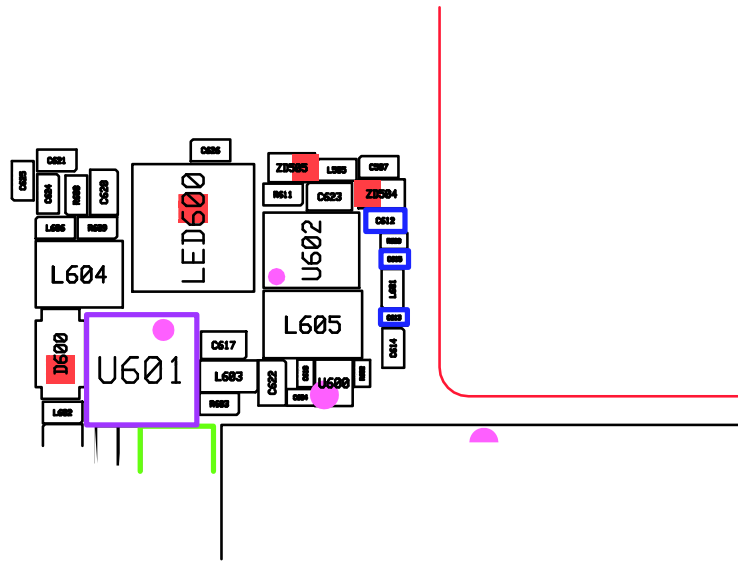
8-3-8. SIM Card Working





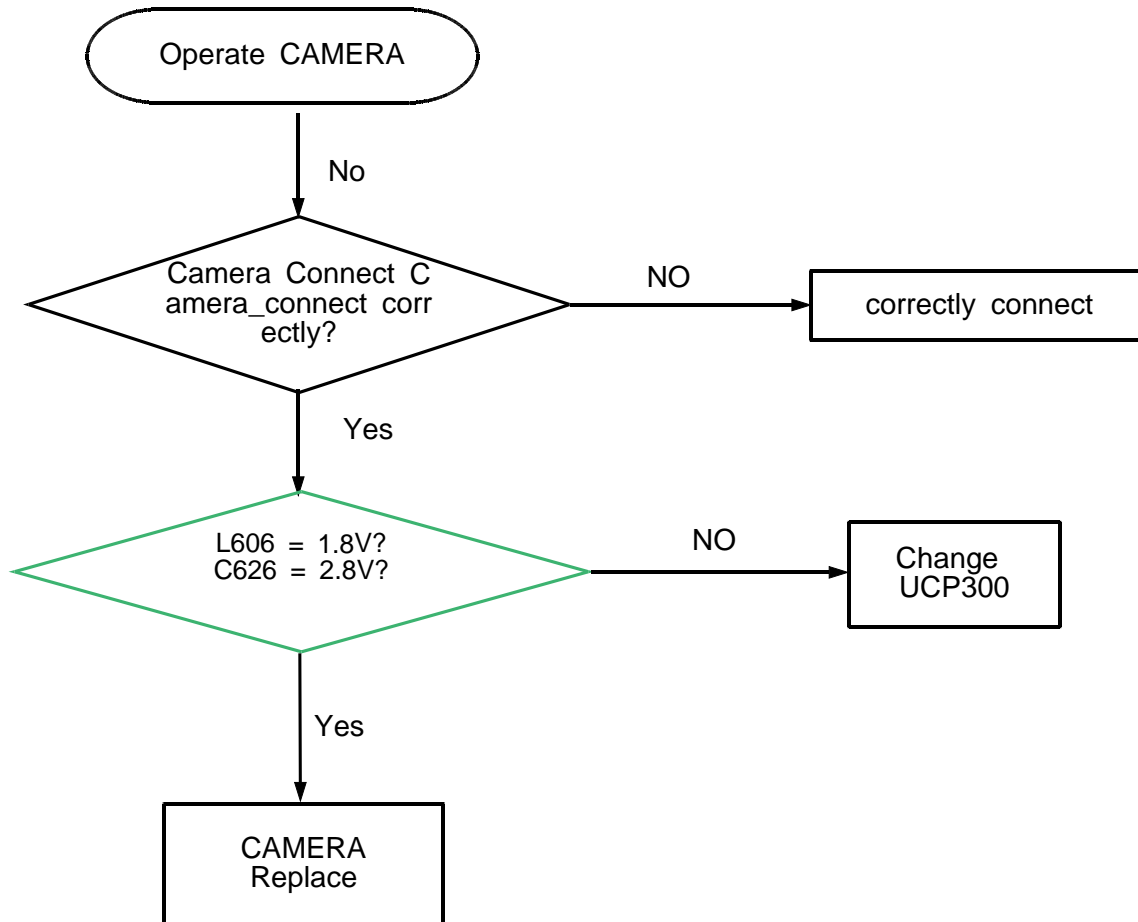
8-3-9 Main(5M) CAMERA Working

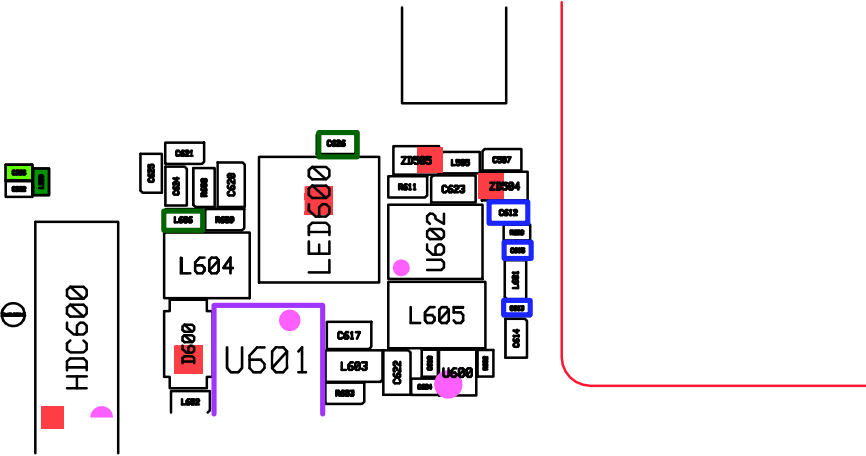




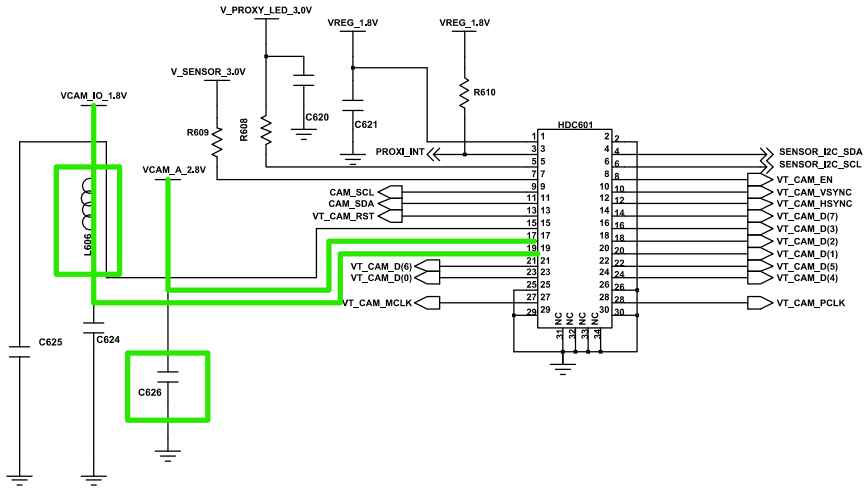
5M CAM

8-3-10 Main(VGA) CAMERA Working

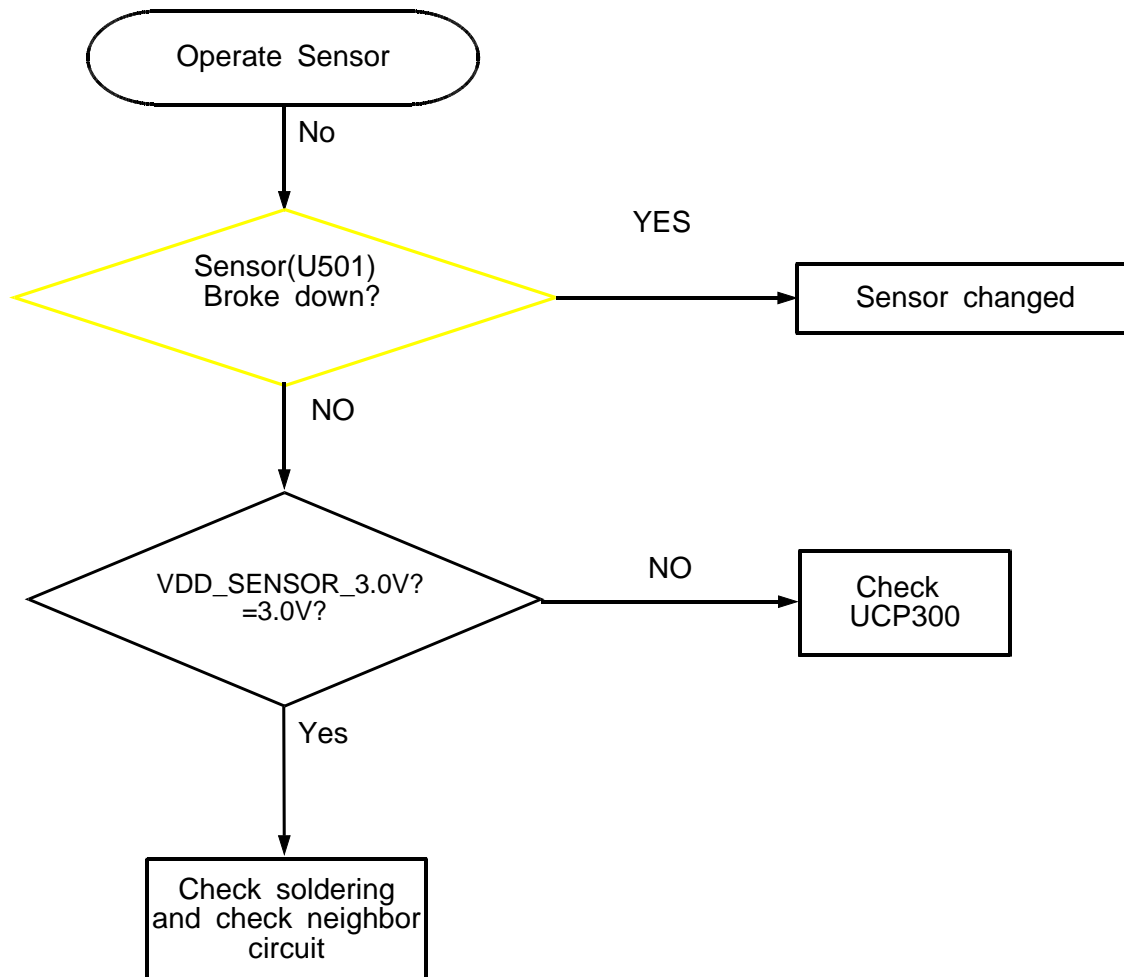


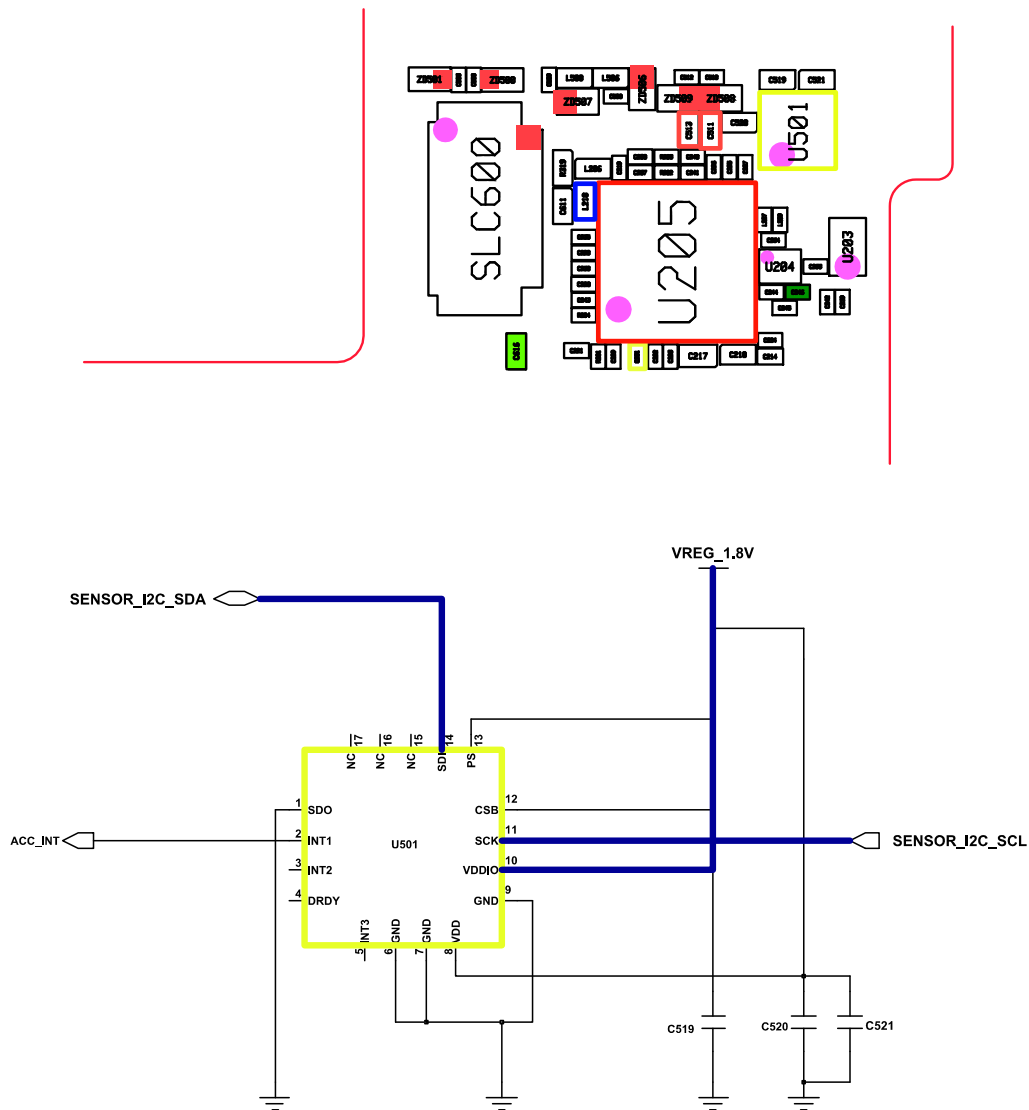


VT CAM(8bit) Proxi Sensor



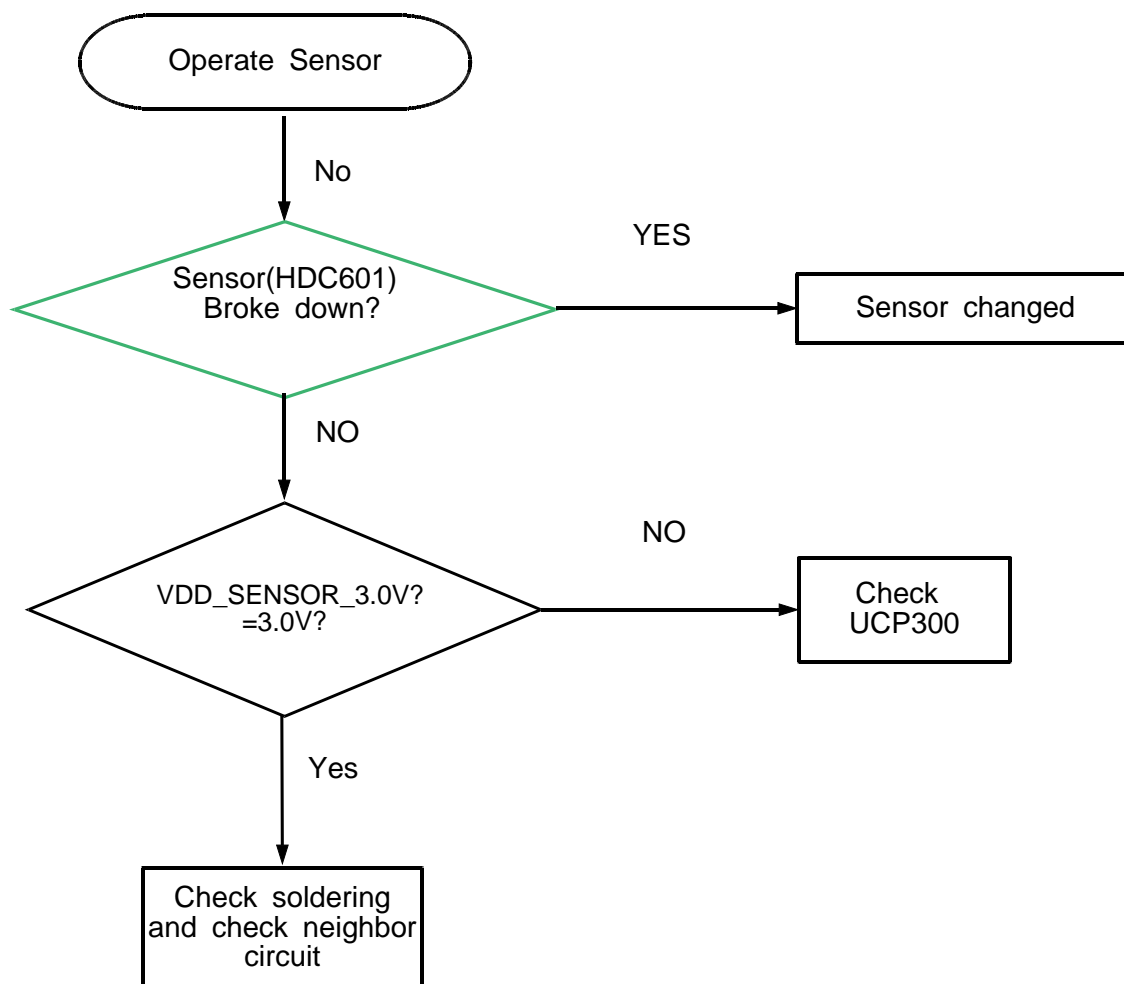
8-3-10 Accelerometer and magnetic sensor

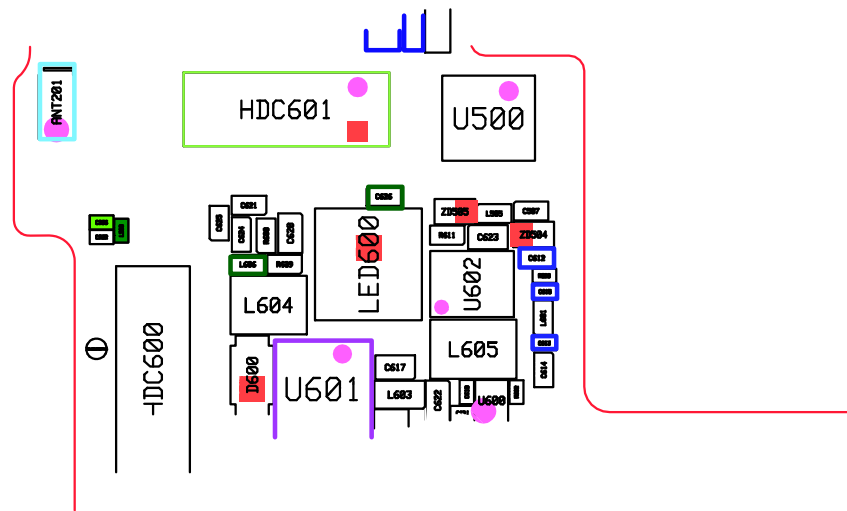




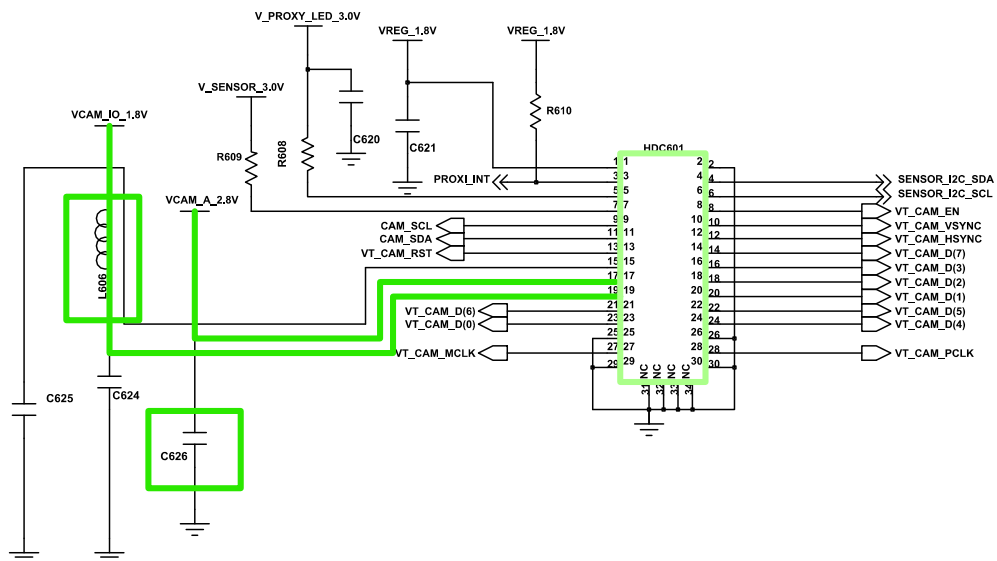
ACC.+MAG. SENSOR

8-3-11. PROXI sensor





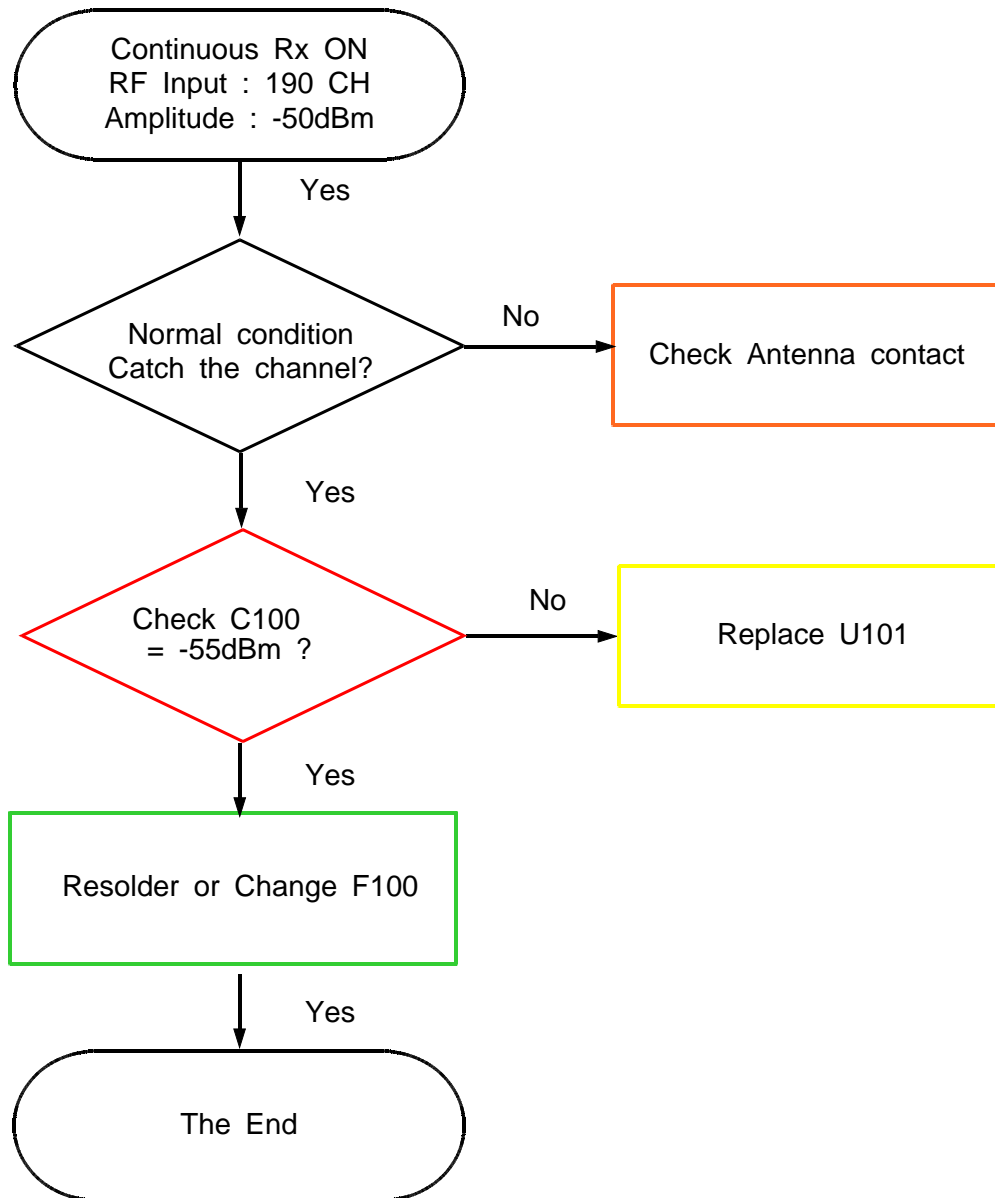
VT CAM(8bit) Proxi Sensor



8-4-1. GSM850 RX

**If you check the tx chain,

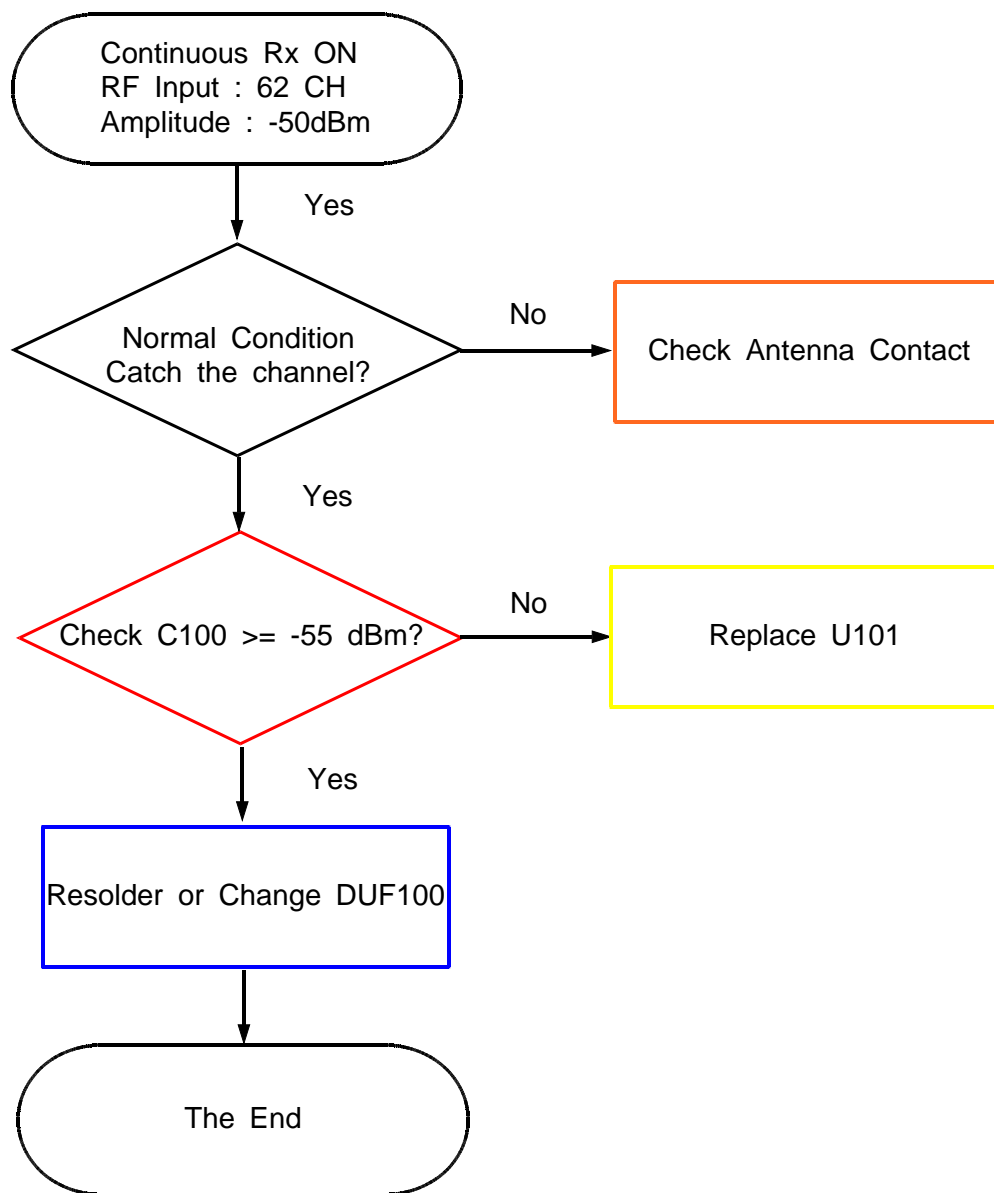
Check the not only RF Device but also resistor, inductor and capacitor.



8-4-2. GSM900 RX

**If you check the tx chain,

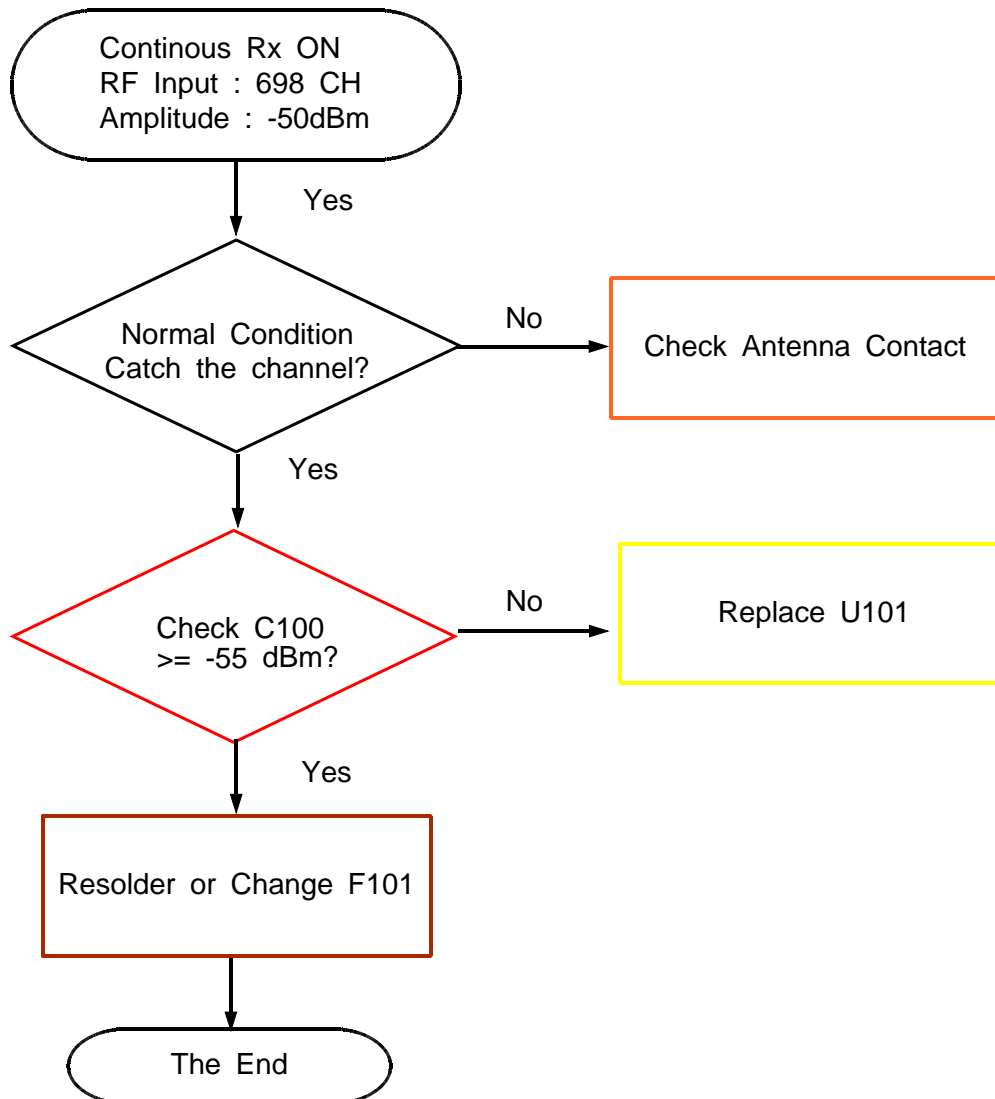
Check the not only RF Device but also resistor, inductor and capacitor.



8-4-3. DCS/PCS RX

**If you check the tx chain,

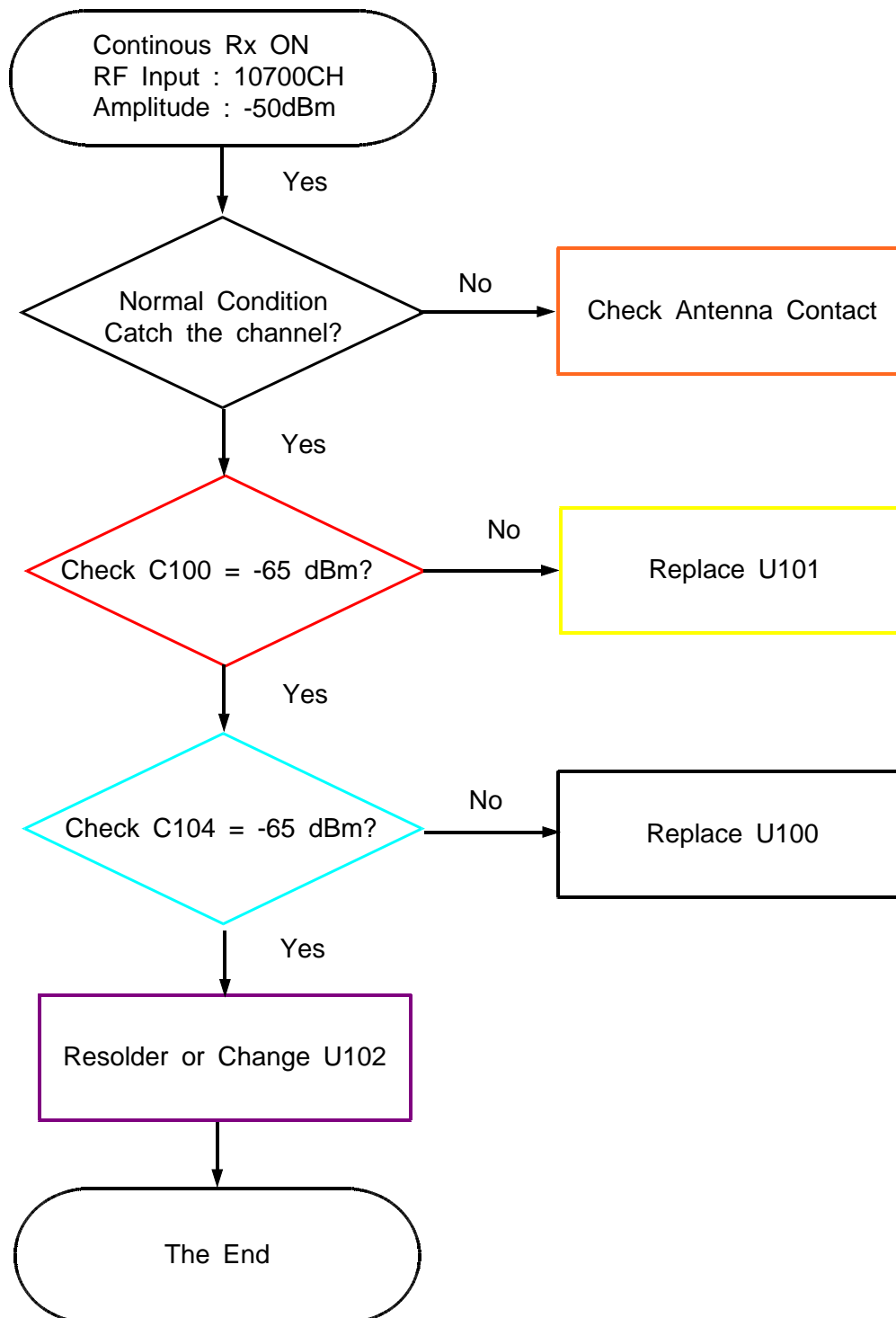
Check the not only RF Device but also resistor, inductor and capacitor.



8-4-4. WCDMA Band1 RX

**If you check the tx chain,

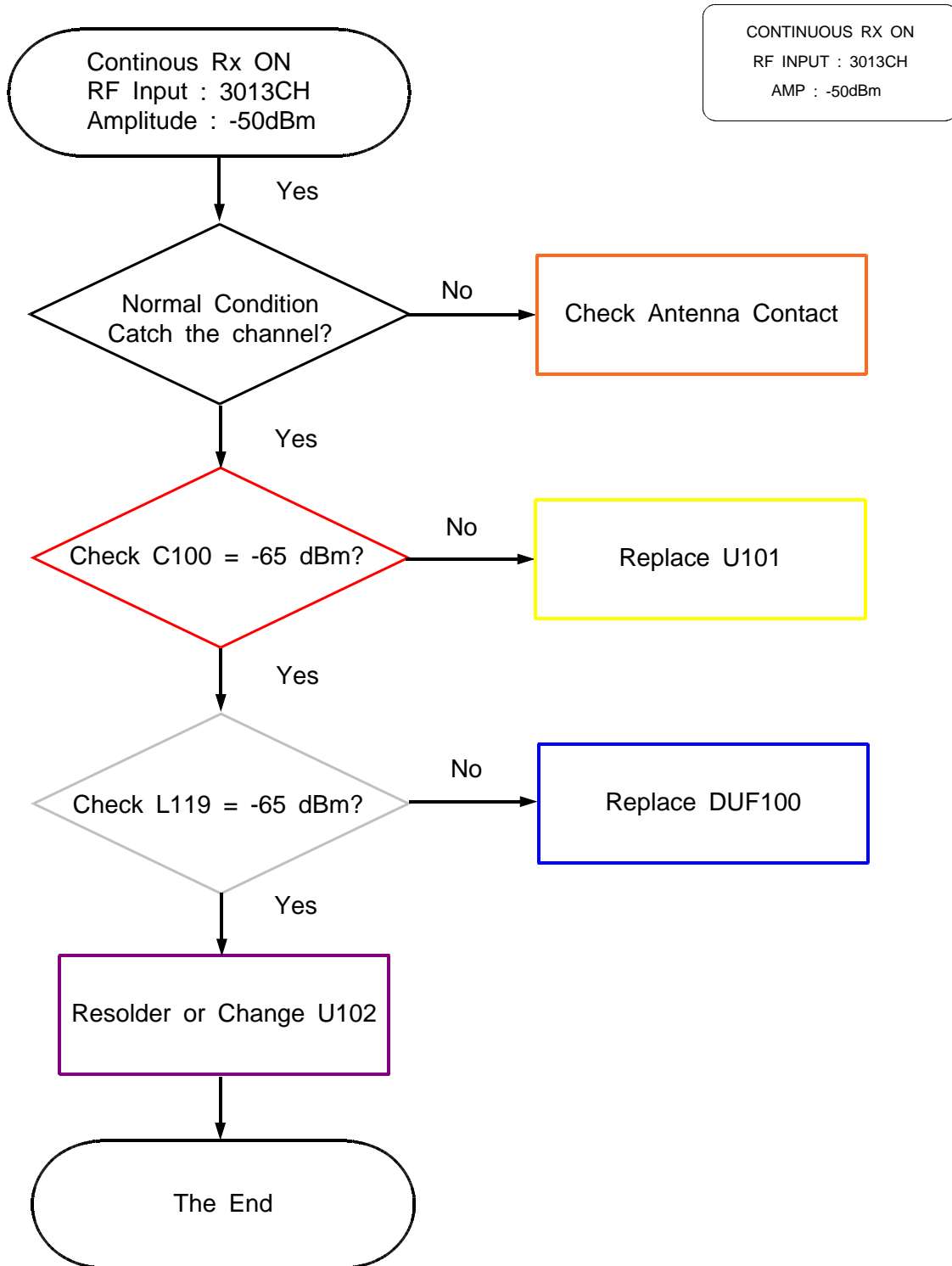
Check the not only RF Device but also resistor, inductor and capacitor.



8-4-5. WCDMA Band5 RX

**If you check the tx chain,

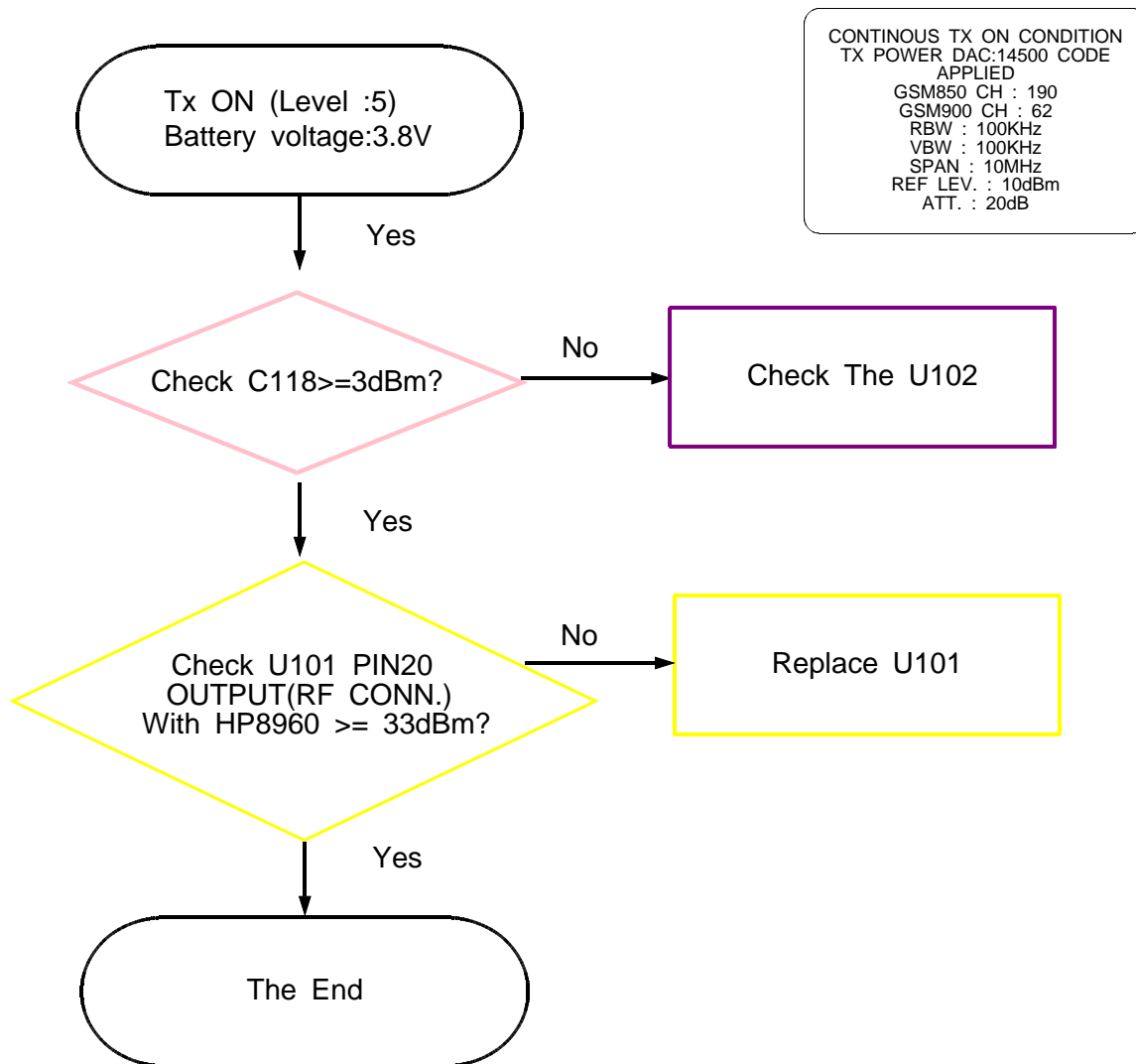
Check the not only RF Device but also resistor, inductor and capacitor.



8-4-6. GSM850/900 TX

**If you check the tx chain,

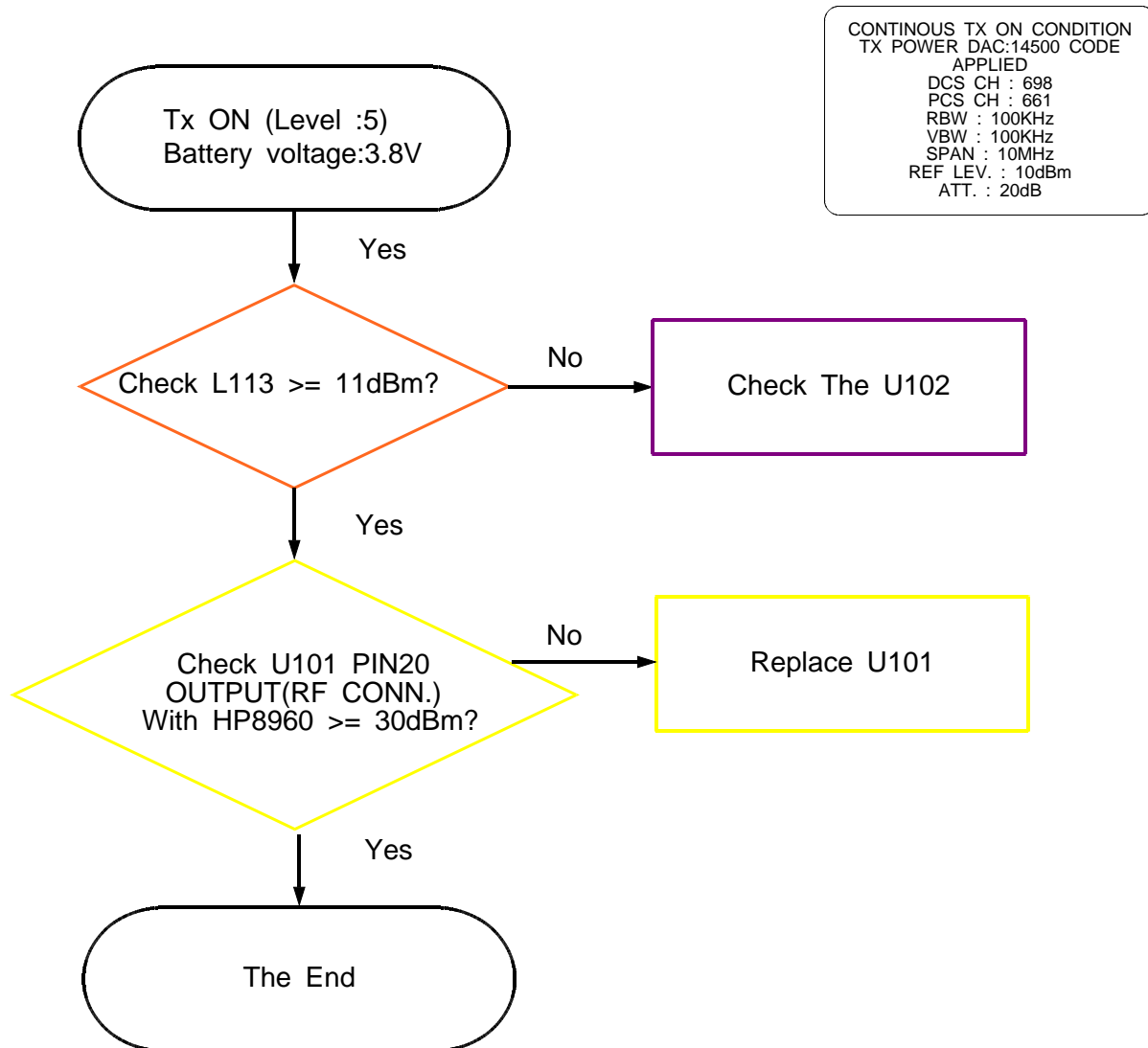
Check the not only RF Device but also resistor, inductor and capacitor.



8-4-7. DCS/PCS TX

**If you check the tx chain,

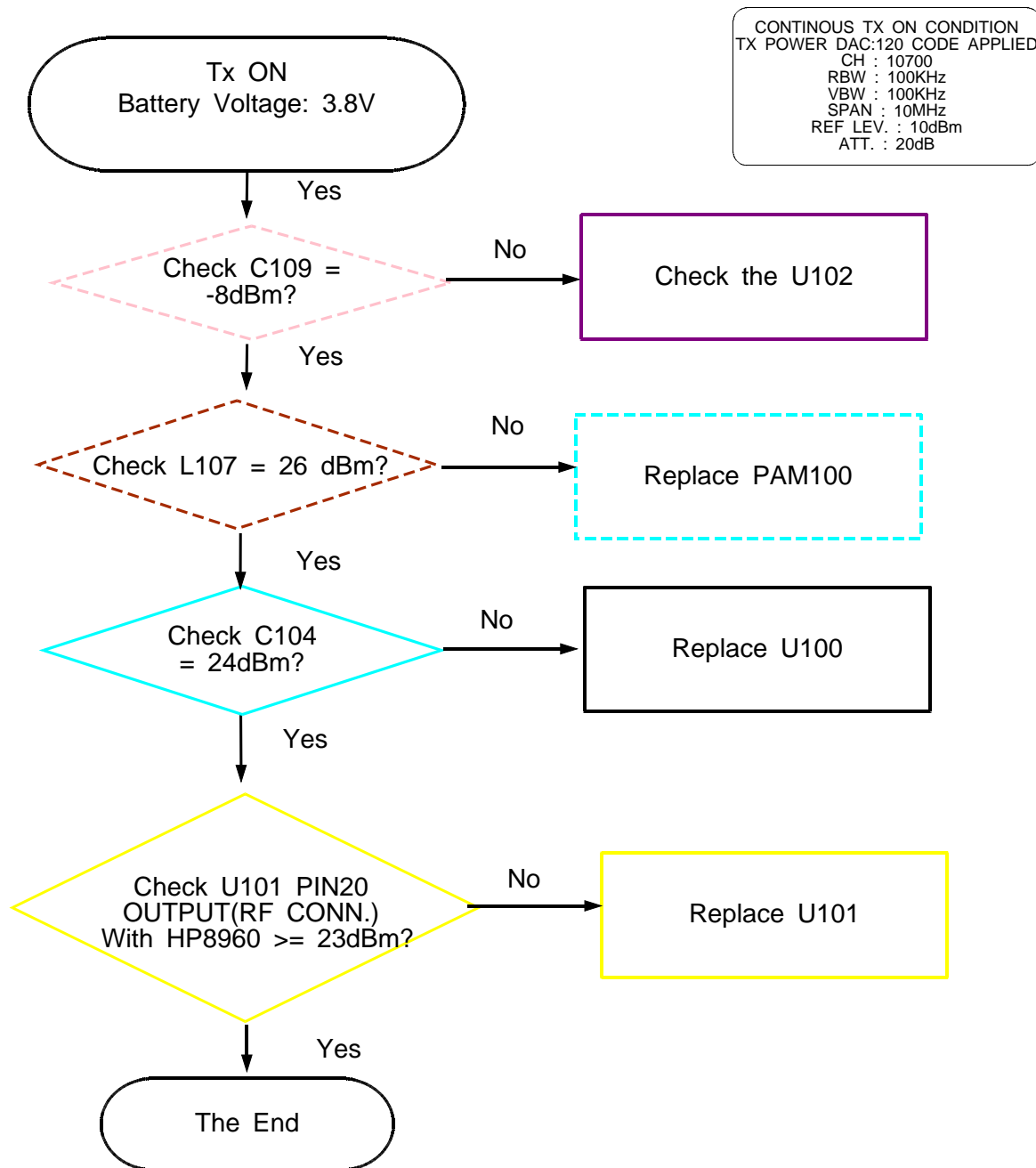
Check the not only RF Device but also resistor, inductor and capacitor.



8-4-8. WCDMA Band1 TX

**If you check the tx chain,

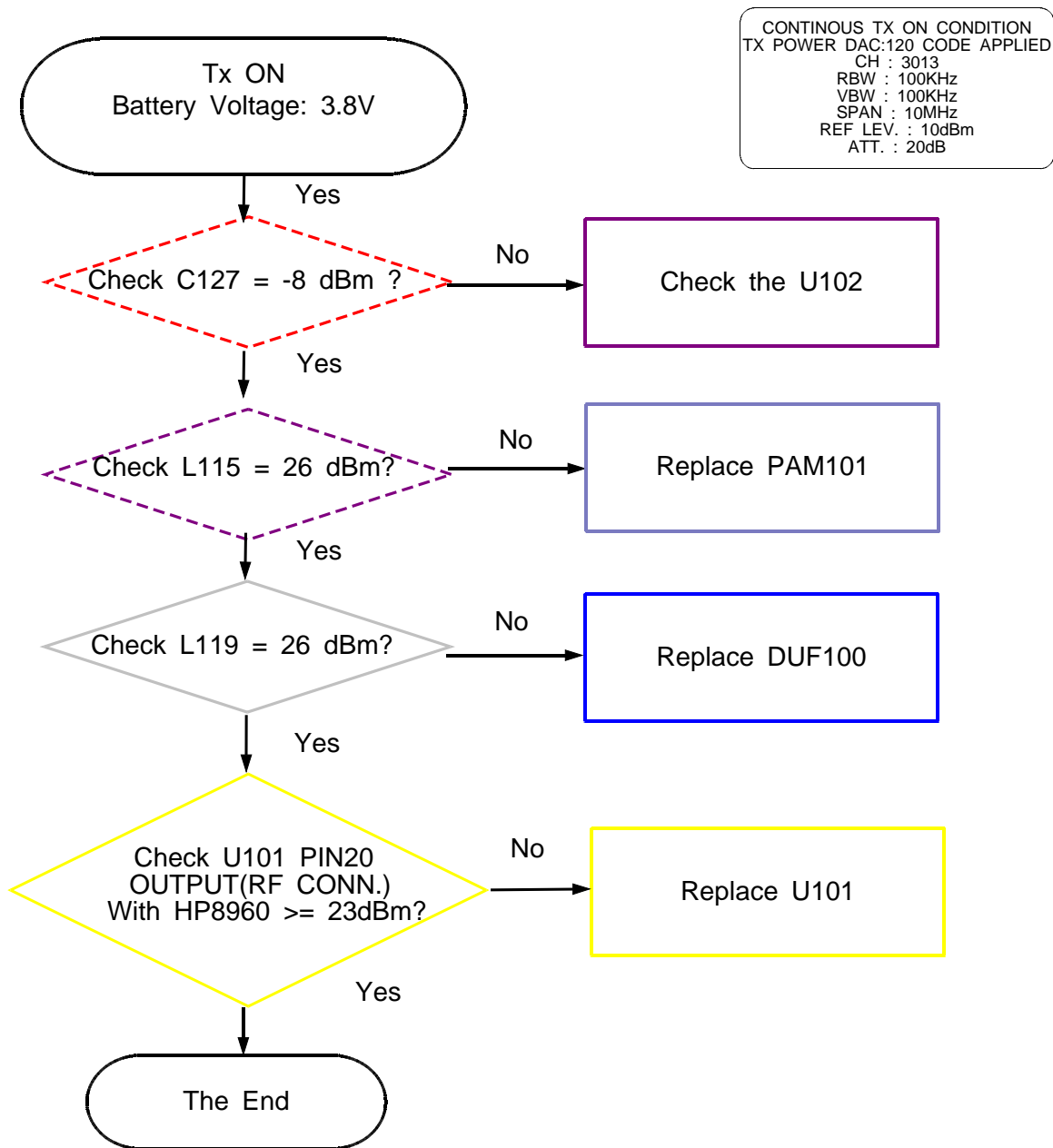
Check the not only RF Device but also resistor, inductor and capacitor.

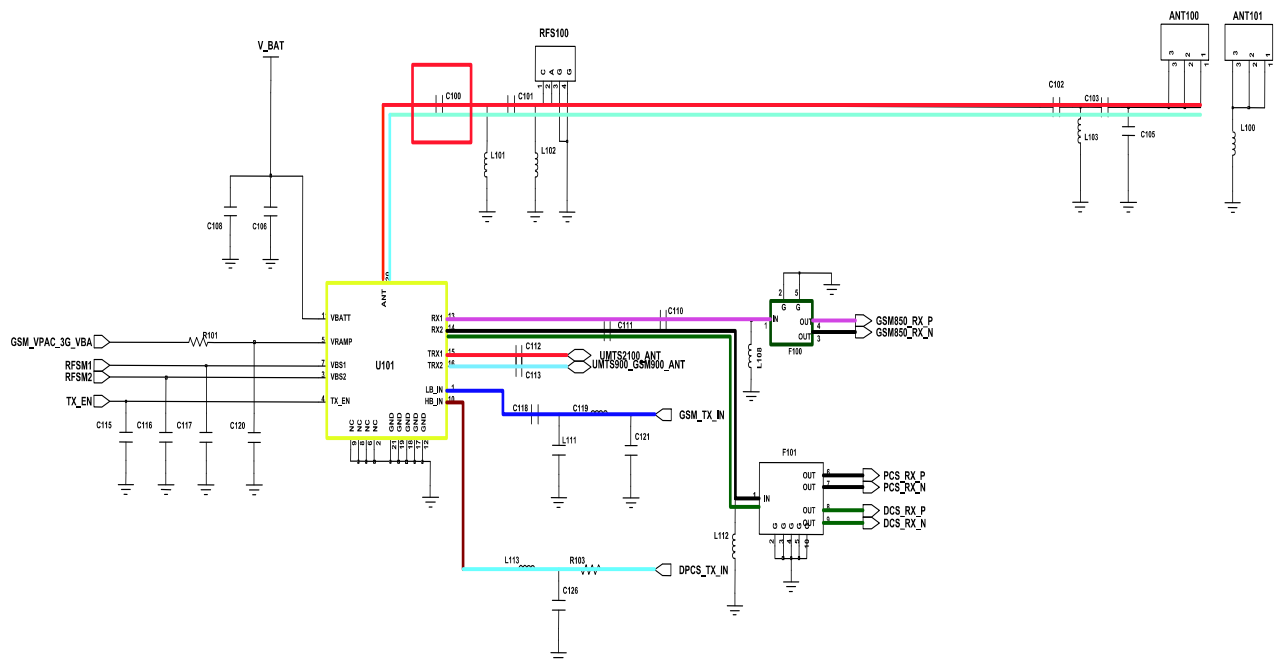
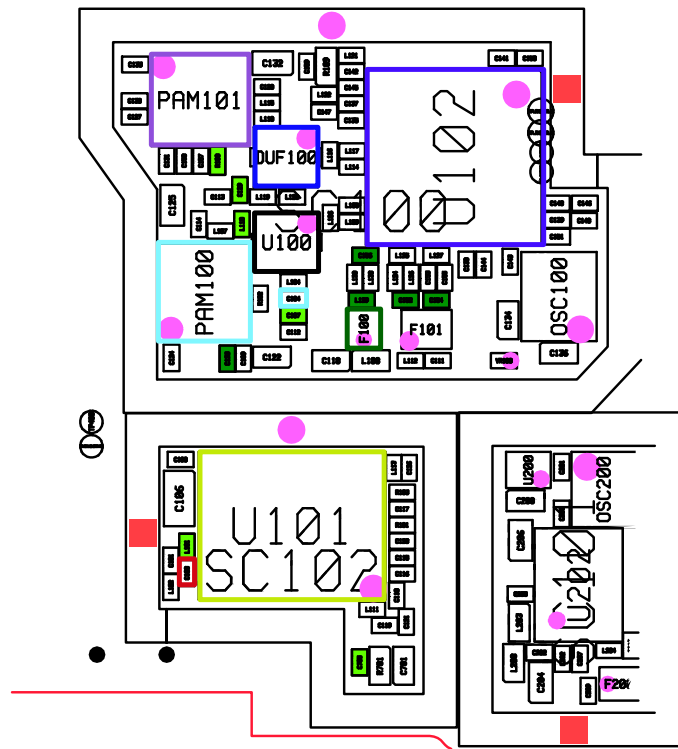


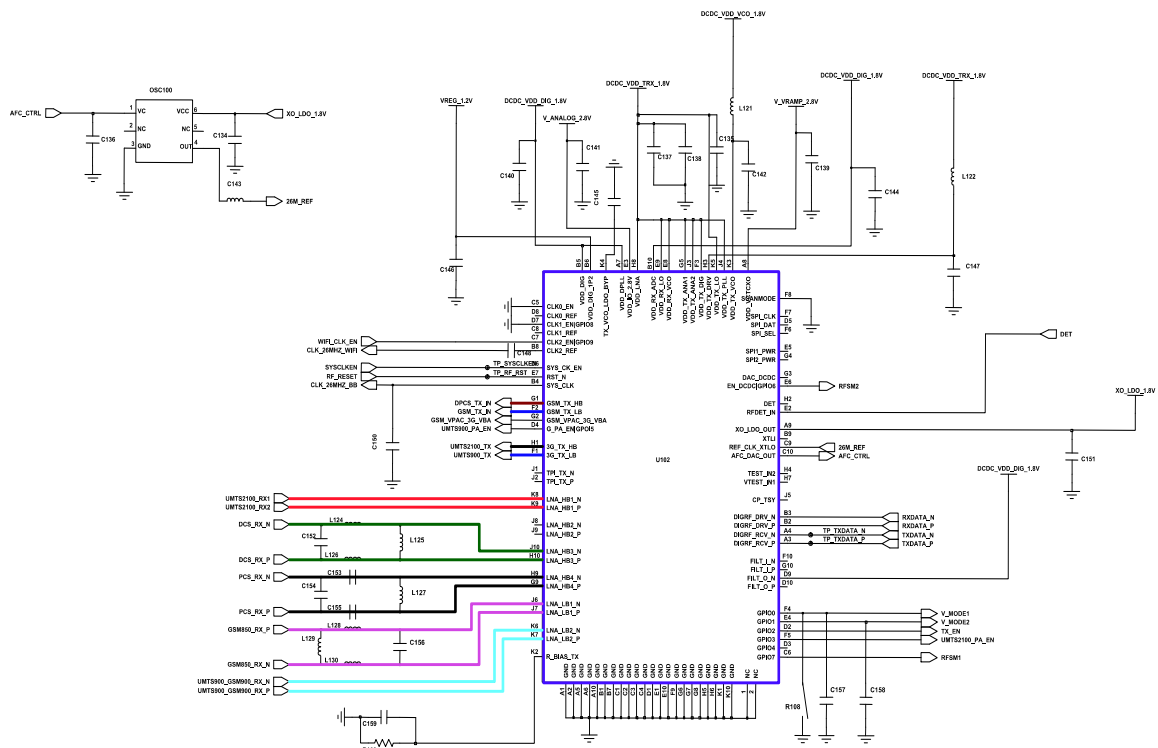
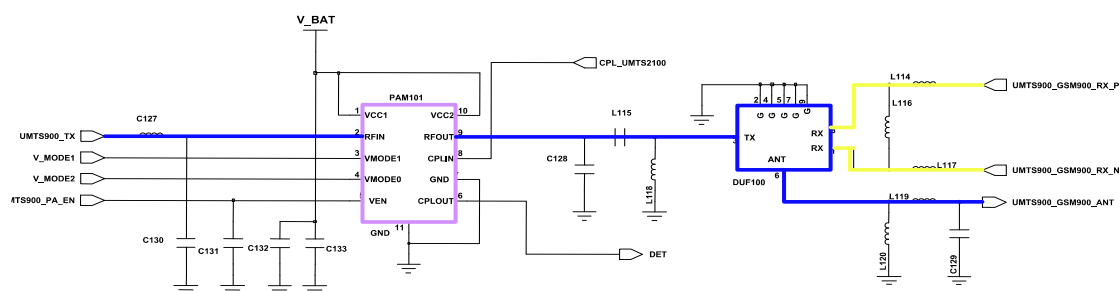
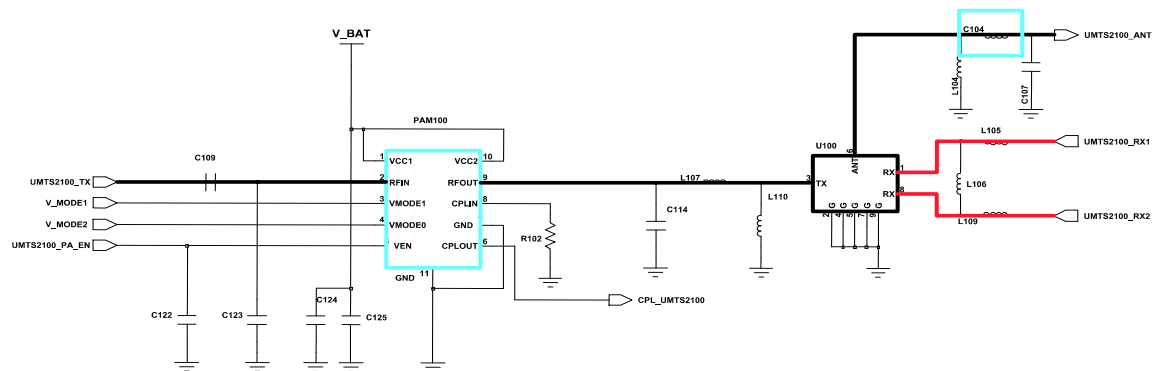
8-4-9. WCDMA Band5 TX

**If you check the tx chain,

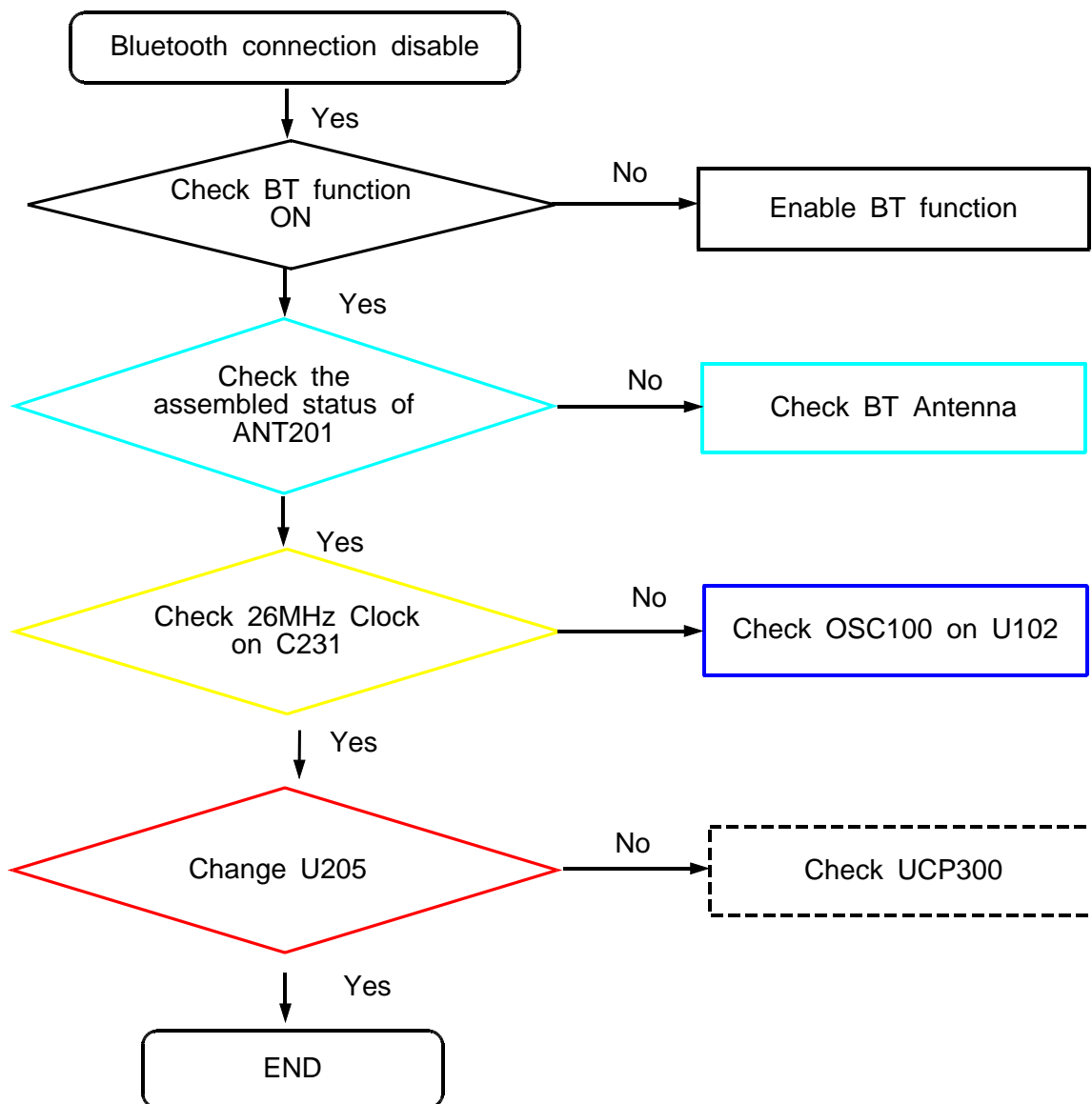
Check the not only RF Device but also resistor, inductor and capacitor.

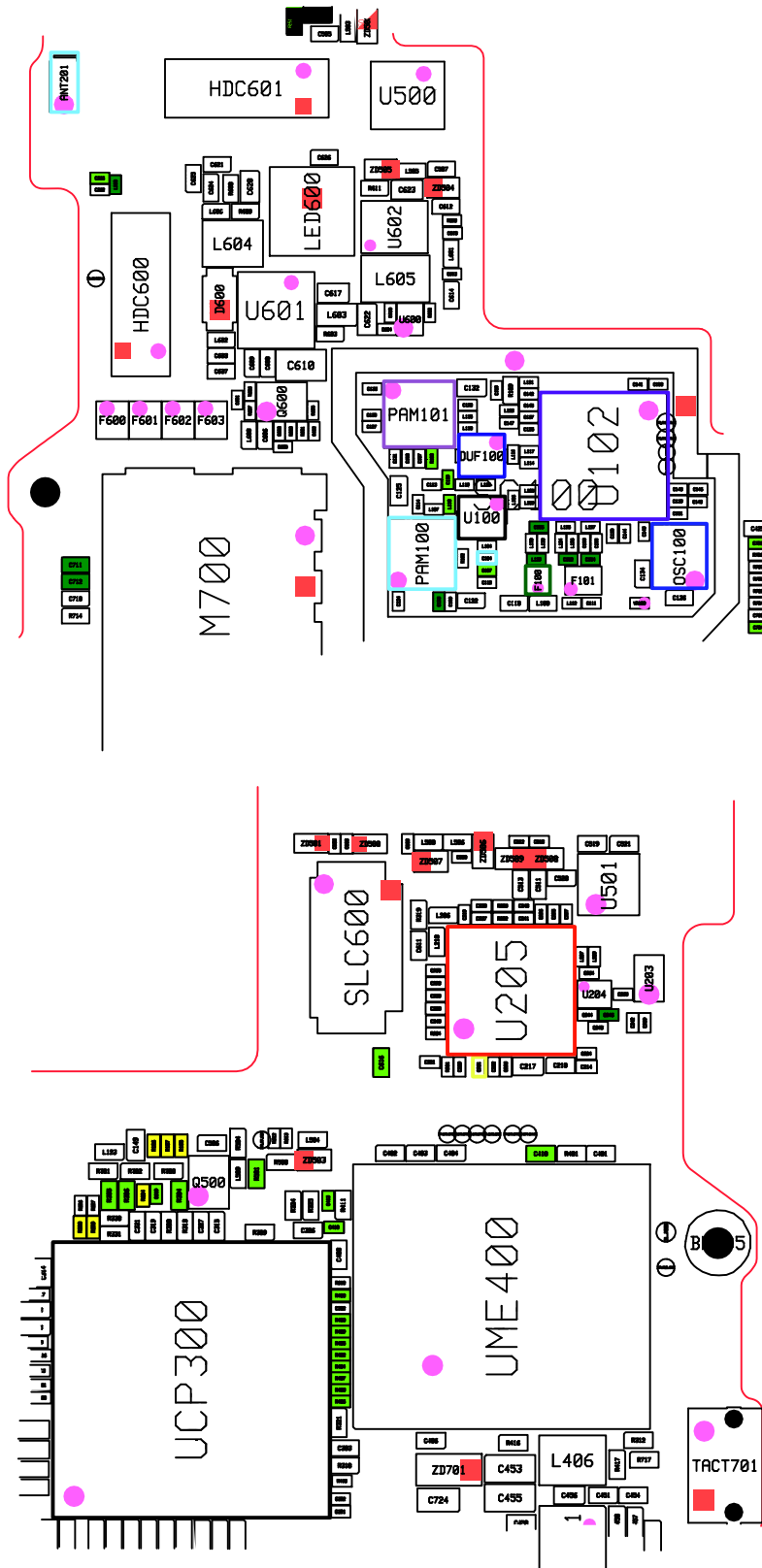




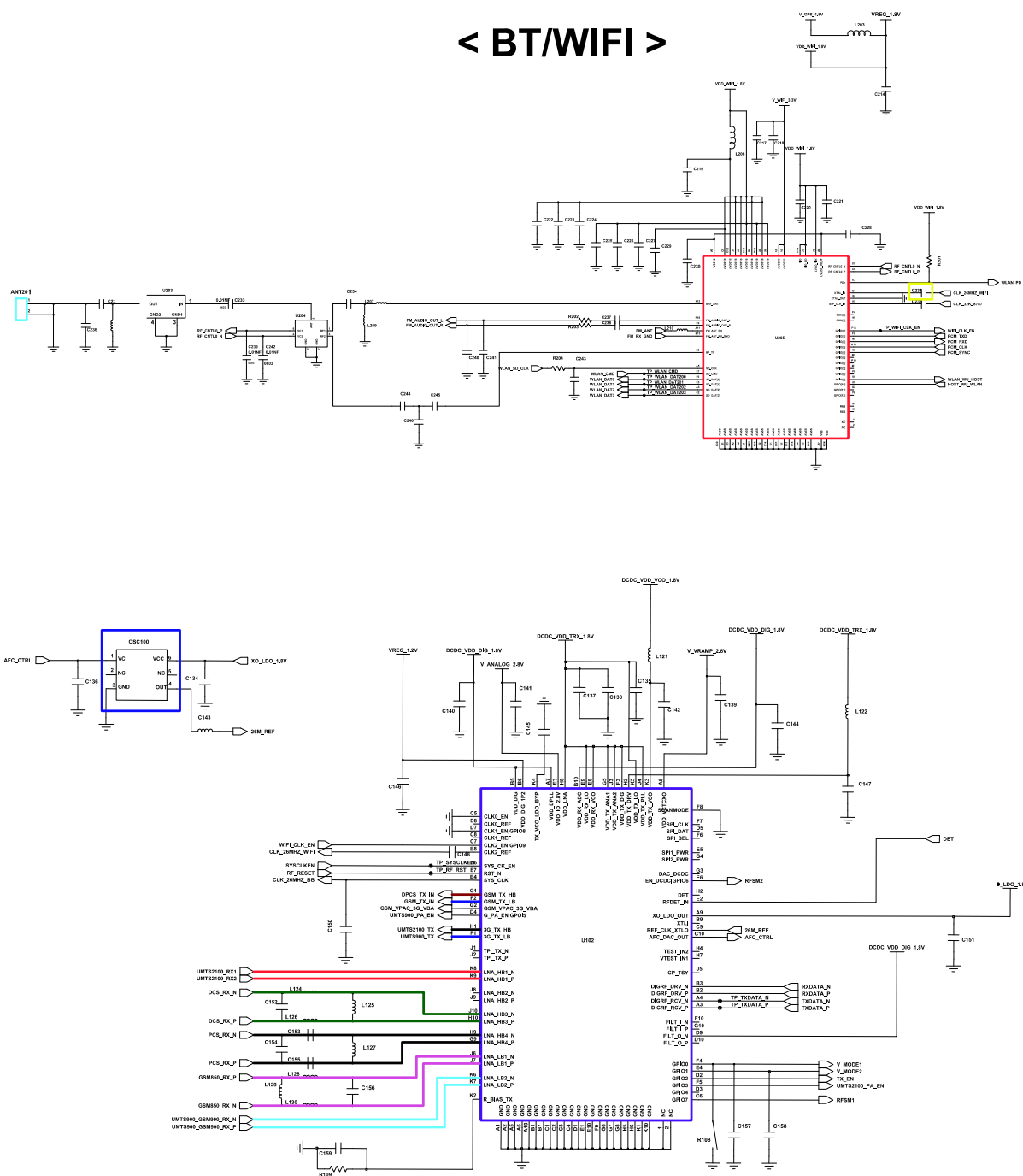


8-4-10. BLUETOOTH

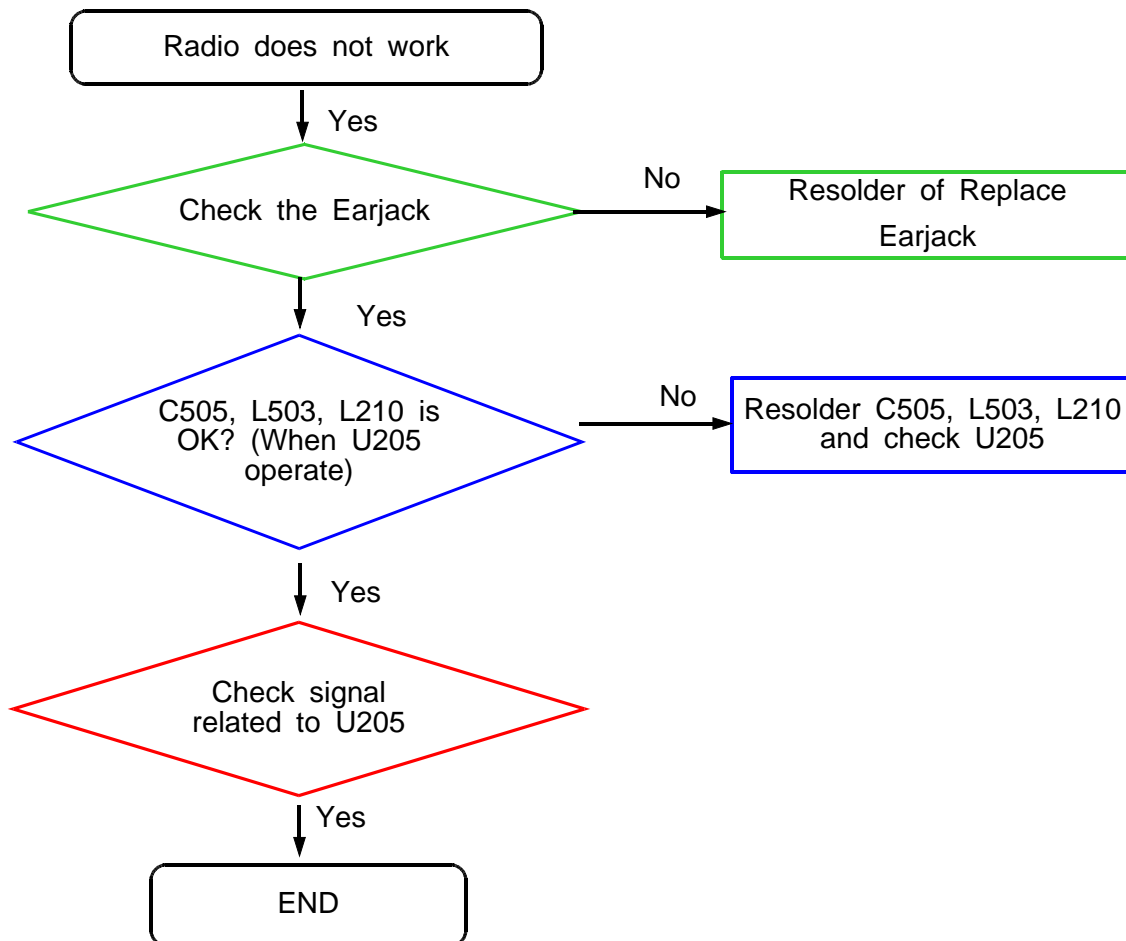


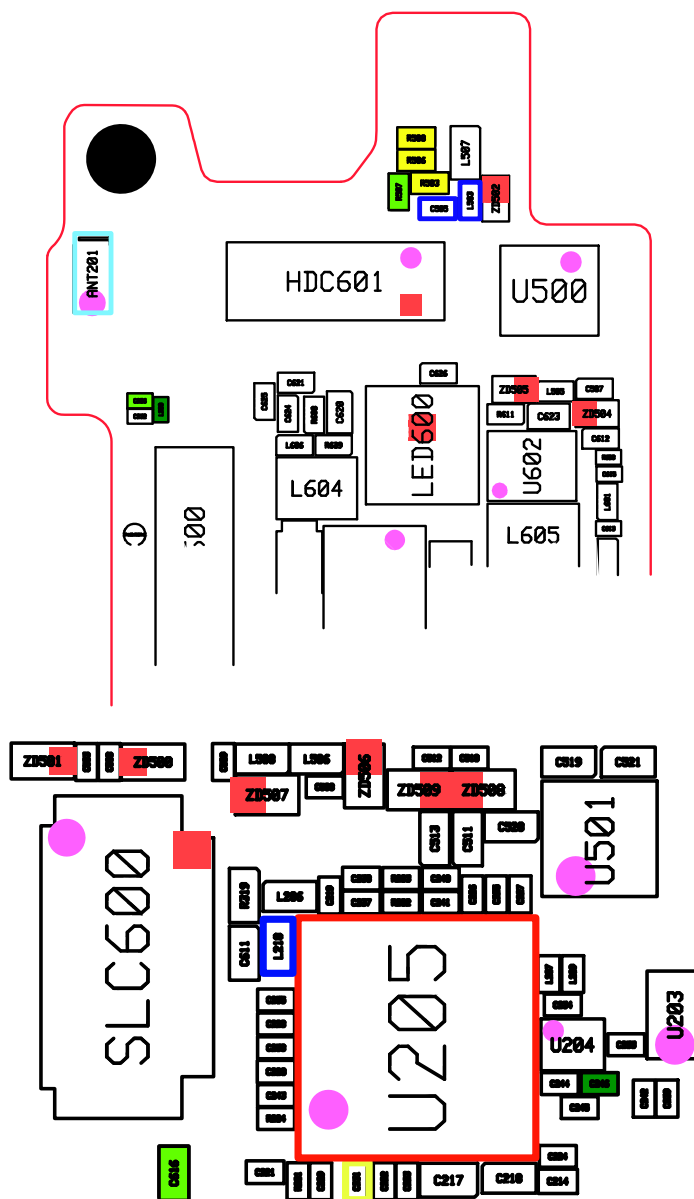


< BT/WIFI >



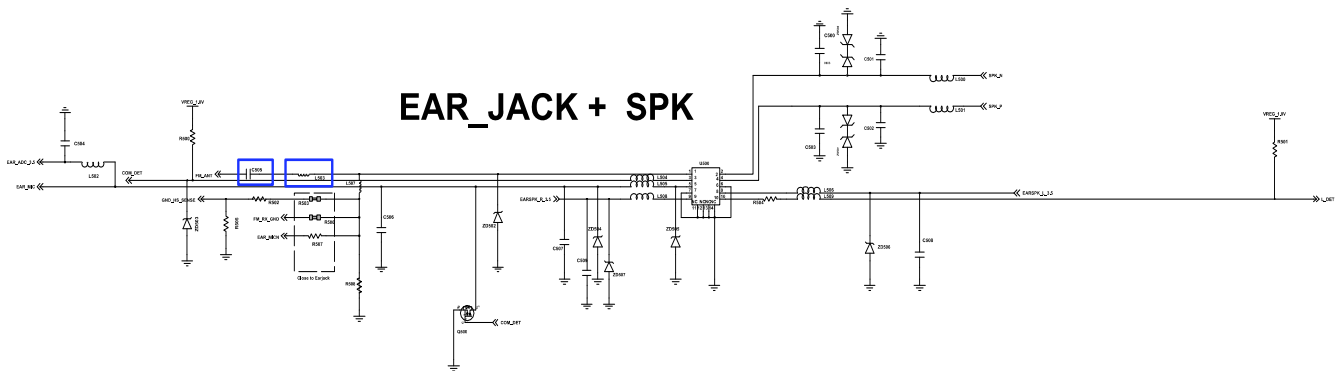
8-4-11. FM RADIO



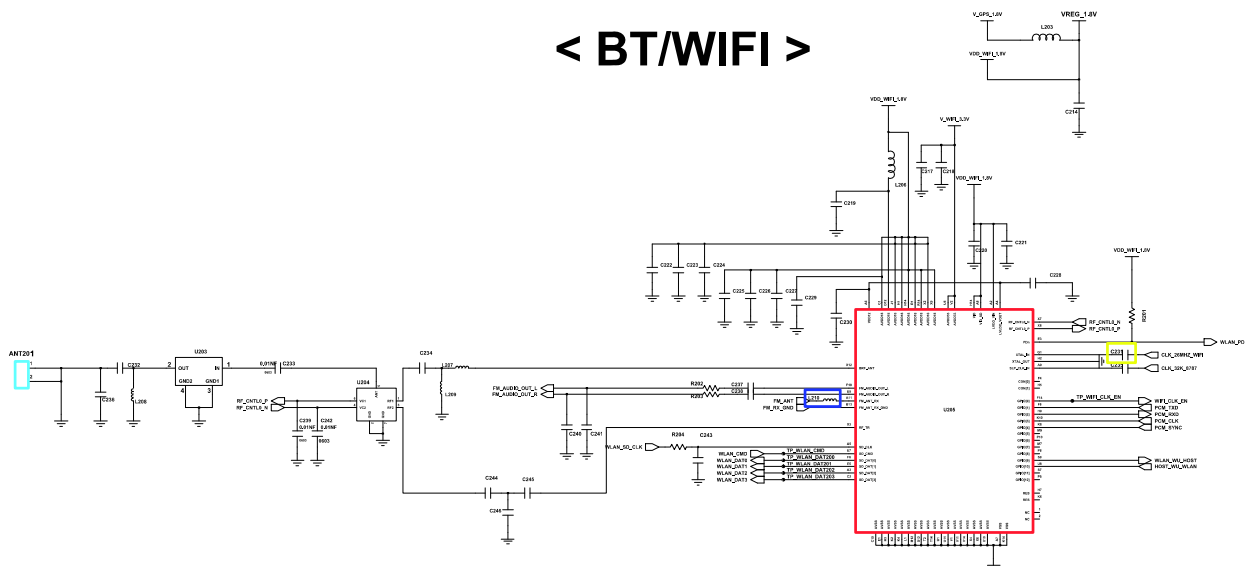


AUDIO

EAR_JACK + SPK



< BT/WIFI >



●
8-5. Service Schematics

- NC Point(Top View)

● : NC

UME400

	1	2	3	4	5	6	7	8	9	10	11	12	13	14
A	●	●	○	○	○	●	●	●	●	●	●	●	●	●
B	●	○	○	○	○	○	●	●	●	●	●	●	●	●
C	●	○	●	○	●	○	●	●	●	●	●	●	●	●
D	●	●	●	●								●	●	●
E	●	●	●		●	○	○	●	●	●		●	●	●
F	●	●	●		○					●		●	●	●
G	●	●	●		○					●		●	●	●
H	●	●	●		●					○		●	●	●
J	●	●	●		●					○		●	●	●
K	●	●	●		○	●	●	○	○	●		●	●	●
L	●	●	●									●	●	●
M	●	●	●	○	○	○	●	●	●	●	●	●	●	●
N	●	○	●	○	○	●	●	●	●	●	●	●	●	●
P	●	●	○	○	○	○	●	●	●	●	●	●	●	●

[illegible]